

FEATURES

- FHD (1920 x 1080 pixels) resolution
- Brightness – 1500 nits (Typ.)
- Contrast ratio – 1000:1 (Typ.)
- Response time – 25ms (Typ.)
- Viewing angle – 178°(H)/178°(V), CR=10
- With PCAP Touch (10 point) _ AG coating
- Built-In PC
- Integrated Intel®J1900/2.0GHz quad-core processor
- Based on Intel® BayTrail platform
- 64Mb Flash ROM
- Operating system - Windows 10

SPECIFICATIONS

DISPLAY			
Item	Specification	Unit	Note
Display Area	476.064(H) x 267.786(V)	mm	
Pixel Number	1920 x R.G.B. x 1080	Pixel	
Display Colors	16.7M	Color	
Display Operation Mode	AHVA / Normally Black	-	

OPTICAL(without Touch glass)							
Item	Symbol	Min.	Typ.	Max.	Unit	Note	
Contrast Ratio	CR	600	1000	-	-		
Center Luminance of White	L _c	1200	1500	-	Cd/m ²		
Response Time	G to G	-	25		ms		
Viewing Angle	Horizontal	Right	75	89	-	Deg.	CR=10
		Left	75	89			
	Vertical	Upper	75	89	-		
		Lower	75	89			

I/O Interface	
Input signal	RJ45 LAN Port x2, USB 3.0 x2, USB 2.0 x1
Output signal	HDMI Out, VGA Out ,Audio Out
Supported mode	Up to 1920 x 1080 @ 60Hz

ELECTRICAL	
DC Input voltage	12V _{DC} /5[A] ± 5%
Power consumption	(TBD)

PHYSICAL		* Please refer to the attached drawings for more information
Dimension	516.0(H) x 311.0(V) x 54.0 mm	
Weight	6.5 kg (TBD)	

ENVIRONMENTAL	
Operating Ambient Temperature	-20°C to + 50°C
Storage Temperature	-20°C to + 60°C

TOUCH/Protection Glass (Optional)	
Projected capacitive Touch	※ Transmittance : 80%

* Specifications are subject to change without notice.

* Even if this product isn't subject of EU ErP(Energy related product), but we give effort to meet energy efficiency standard(ErP).

MODEL

TLK-215

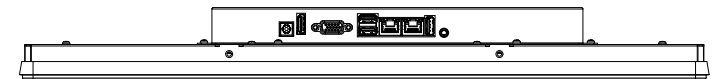
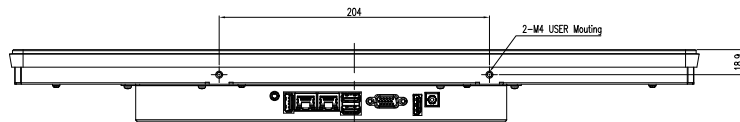
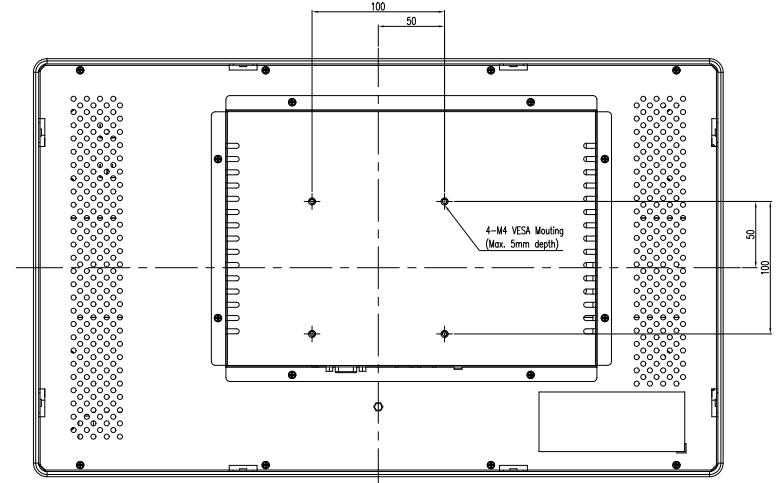
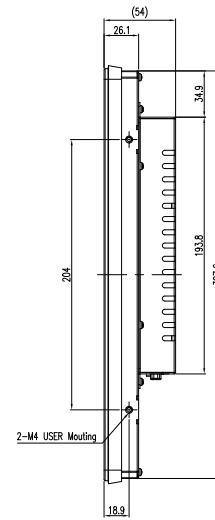
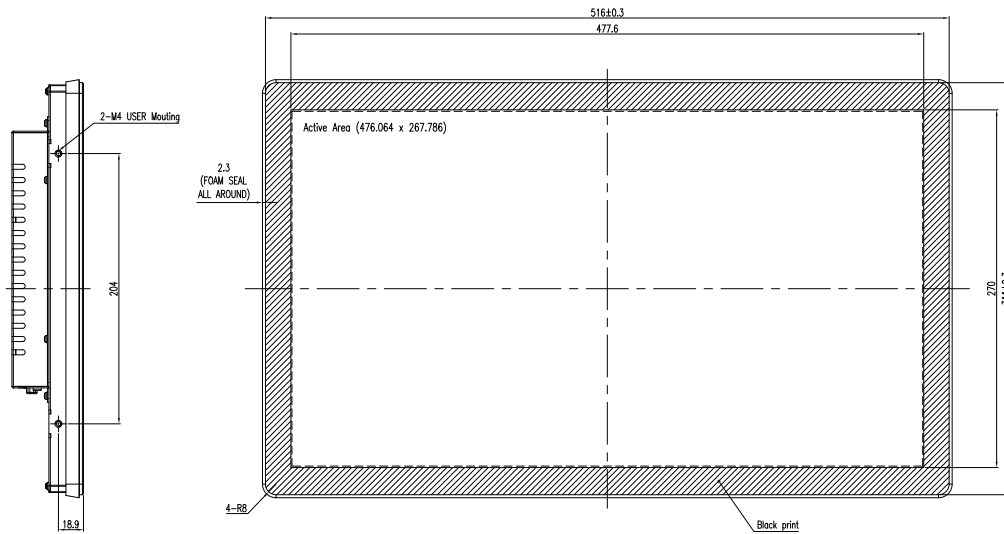
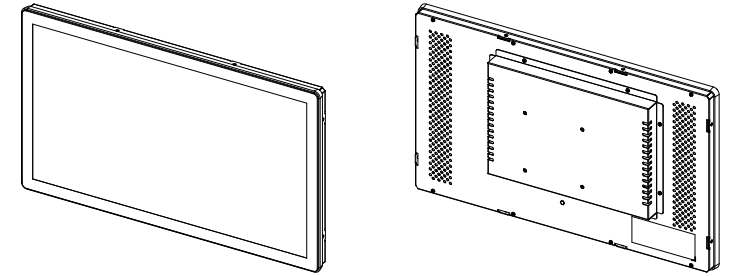
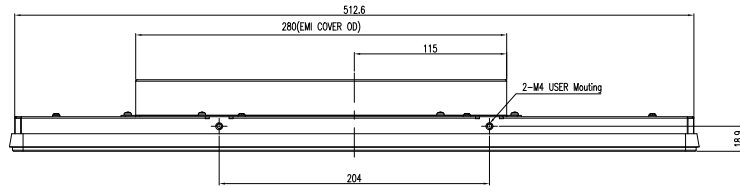
* Specifications and drawing are subject to change.

* Do not block the vent hole.

No additional cover on the vent hole should be used.

It is recommended to have enough space for air circulation.

REV.	ECO No.	DESCRIPTION	DATE	APP'L
0.90		PRODUCTION RELEASE	23.01.18	



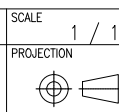
TEMPORARY

NOTE

1. STANDARD TOLERANCES : ±0.5
2. NO SCRATCH, BURR & CRACK

1			
NO.	DESCRIPTION	Q'TY	REMARK
No.	-		
NAME	21.5" OPEN FRAME (HB_Built-In PC)		
MAT'L	EG1		

Q'TY 1ea / 1set
 REVISION Sample 0.90



APPROVED
 CHECKED
 DRAWN Sang Min Choi

TITLE BUYER
 DATE 2023. 01. 18

DWG.NO. G11

