



<i>Product Specification</i>	<i>Model:</i>	<i>AWK-320240T35N10</i>	<i>Rev. No.</i>	<i>Issued Date.</i>	<i>Page.</i>
			<i>A</i>	<i>2023/09/06</i>	<i>1/24</i>

Thin Film Transistor LCD MODULE
MODEL: AWK-320240T35N10
Customer's No.:

Acceptance

10-1 Floor, No. 192, Tahtung Road,
Sec. 3, Hsi-Chih Dist,
New Taipei City, Taiwan

Approved and Checked by

Approved by	Checked by		Made by



<i>Product Specification</i>	<i>Model:</i>	<i>AWK-320240T35N10</i>	<i>Rev. No.</i>	<i>Issued Date.</i>	<i>Page.</i>
			<i>A</i>	<i>2023/09/06</i>	<i>3/24</i>

Table of Contents

List	Description	Page No.
	Cover	1
	Revision Record	2
	Table of Contents	3
1	Scope	4
2	General Information	4
3	External Dimensions	5
4	Interface Description	6
5	Absolute Maximum Ratings	7
6	DC Characteristics	8
7	Timing Characteristics	9
8	Backlight Characteristics	12
9	Optical Characteristics	13
10	Reliability Test Conditions and Methods	15
11	Inspection Standard	16
12	Handling Precautions	21
13	Precaution for Use	23
14	Packing	24



Product Specification	Model:	AWK-320240T35N10	Rev. No.	Issued Date.	Page.
			A	2023/09/06	4/24

1. Scope

This specification defines general provisions as well as inspection standards for TFT module supplied by ACROWISE electronics. If the event of unforeseen problem or unspecified items may occur, naturally shall negotiate and agree to solution

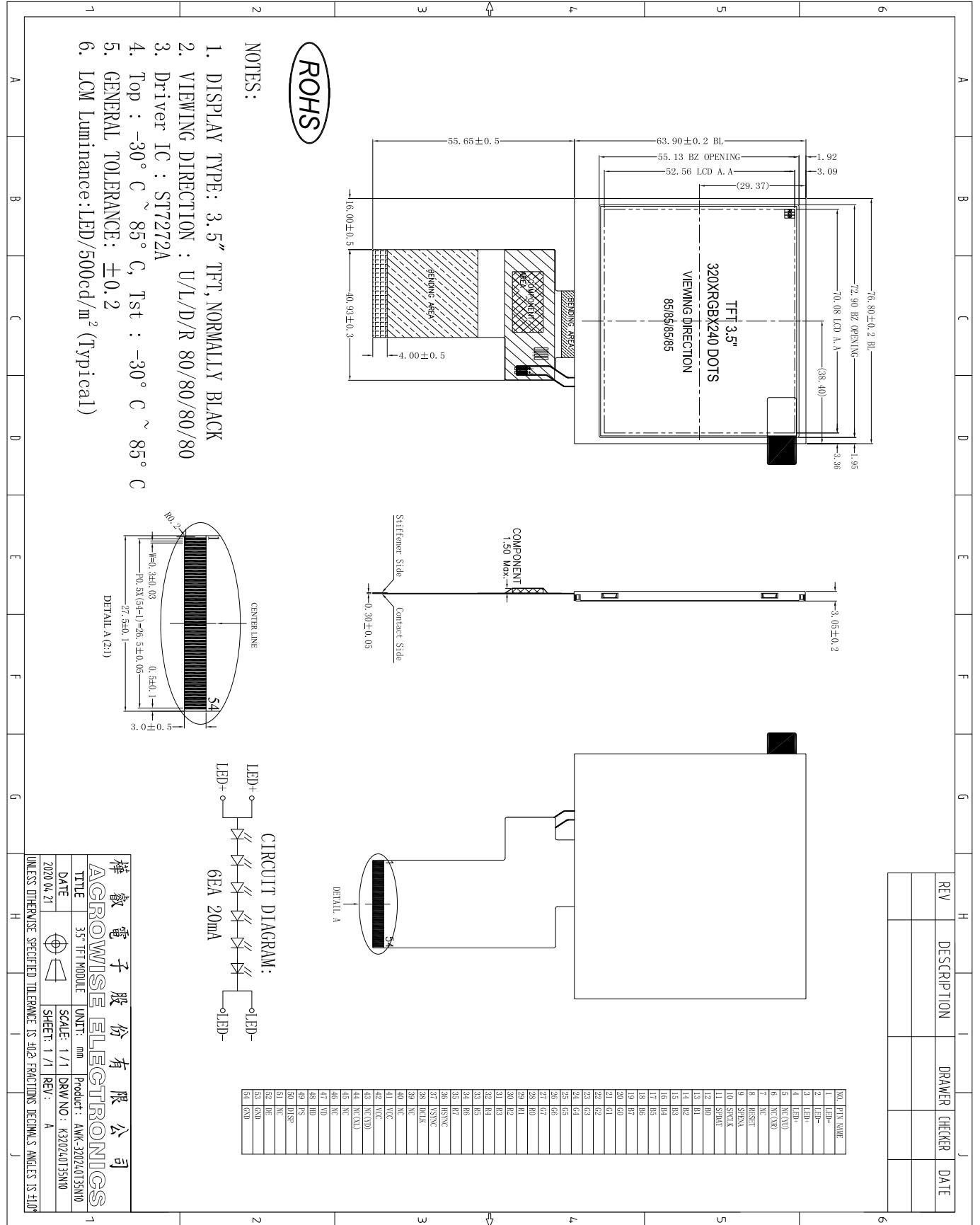
2. General Information

ITEM	STANDARD VALUES	UNITS
LCD type	3.5'TFT	--
Dot arrangement	320 (RGB)×240	dots
Color filter array	RGB vertical stripe	--
Display mode	Normally Black / IPS	-
Eyes Viewing Direction	80/80/80/80	--
Driver IC	ST7272A	--
Module size	76.8(W)×63.9(H)×3.05(T)	mm
Active area	70.08(W)×52.56(H)	mm
Dot pitch	0.219(W)×0.219(H)	mm
Interface	RGB	--
Operating temperature	-30 ~ +85	°C
Storage temperature	-30 ~ +85	°C
Back Light	6 White LEDS	--



Product Specification	Model:	AWK-320240T35N10	Rev. No.	Issued Date.	Page.
			A	2023/09/06	5/24

3.External Dimensions





Product Specification	Model:	AWK-320240T35N10	Rev. No.	Issued Date.	Page.
			A	2023/09/06	6/24

4. Interface Description

Pin No.	Symbol	I/O	Function
1-2	LED-	P	LED power cathode
3-4	LED+	P	LED power anode
5~7	NC	-	No connection
8	RESET	I	Reset pin
9	SPENA	-	Serial port data enable signal
10	SPCLK	-	Serial data clock
11	SPDAT	-	Serial data
12~19	B0-B7	I	Blue data bus
20-27	G0-G7	I	Green data bus
28-35	R0-R7	I	Red data bus
36	HSYNC	I	Horizontal sync input
37	VSYNC	I	Vertical sync input
38	DOTCLK	I	Data clock input
39-40	NC	-	No connection
41~42	VCC	P	System power
43~46	NC	-	No connection
47	VD	I	Vertical scan direction control pin. This pin must be connected to "H" or "L" according to system application.
48	HD	I	Horizontal scan direction control pin. This pin must be connected to "H" or "L" according to system application.
49	PS	I	Set parallel or serial RGB interface L Serial 8 bit RGB interface H Parallel 24 bit RGB interface
50	DISP	I	DISP sets the display mode. L Standby mode H Normal display mode
51	NC	-	No connection
52	DE	I	Data enable pin
53~54	GND	P	Ground



Product Specification	Model:	AWK-320240T35N10	Rev. No.	Issued Date.	Page.
			A	2023/09/06	7/24

5. Absolute Maximum Ratings

5.1 Electrical Absolute Maximum Ratings (GND=0V ,Ta=25°C)

Item	Symbol	Min.	Max.	Unit	Note
Power Supply Voltage	VCC	-0.3	4.0	V	1,2

Notes:

1. If the module is above these absolute maximum ratings. It may become permanently damaged. Using the module within the following electrical characteristic conditions are also exceeded, the module will malfunction and cause poor reliability.
2. $V_{CC} > GND$ must be maintained.
3. Please be sure users are grounded when handing LCD Module

5.2 Environmental Absolute Maximum Ratings

Item	Storage		Operating		Note
	MIN.	MAX.	MIN.	MAX.	
Ambient Temperature	-30°C	85°C	-30°C	85°C	1,2
Humidity	-	-	-	-	3

1. The response time will become lower when operated at low temperature.
2. Background color changes slightly depending on ambient temperature.
The phenomenon is reversible.
3. $T_a \leq 40^\circ\text{C}$: 90%RH MAX.
 $T_a > 40^\circ\text{C}$: Absolute humidity must be lower than the humidity of 90%RH at 40°C

6. DC Characteristics

6.1 Electrical characteristics (GND=0V ,Ta=25°C)

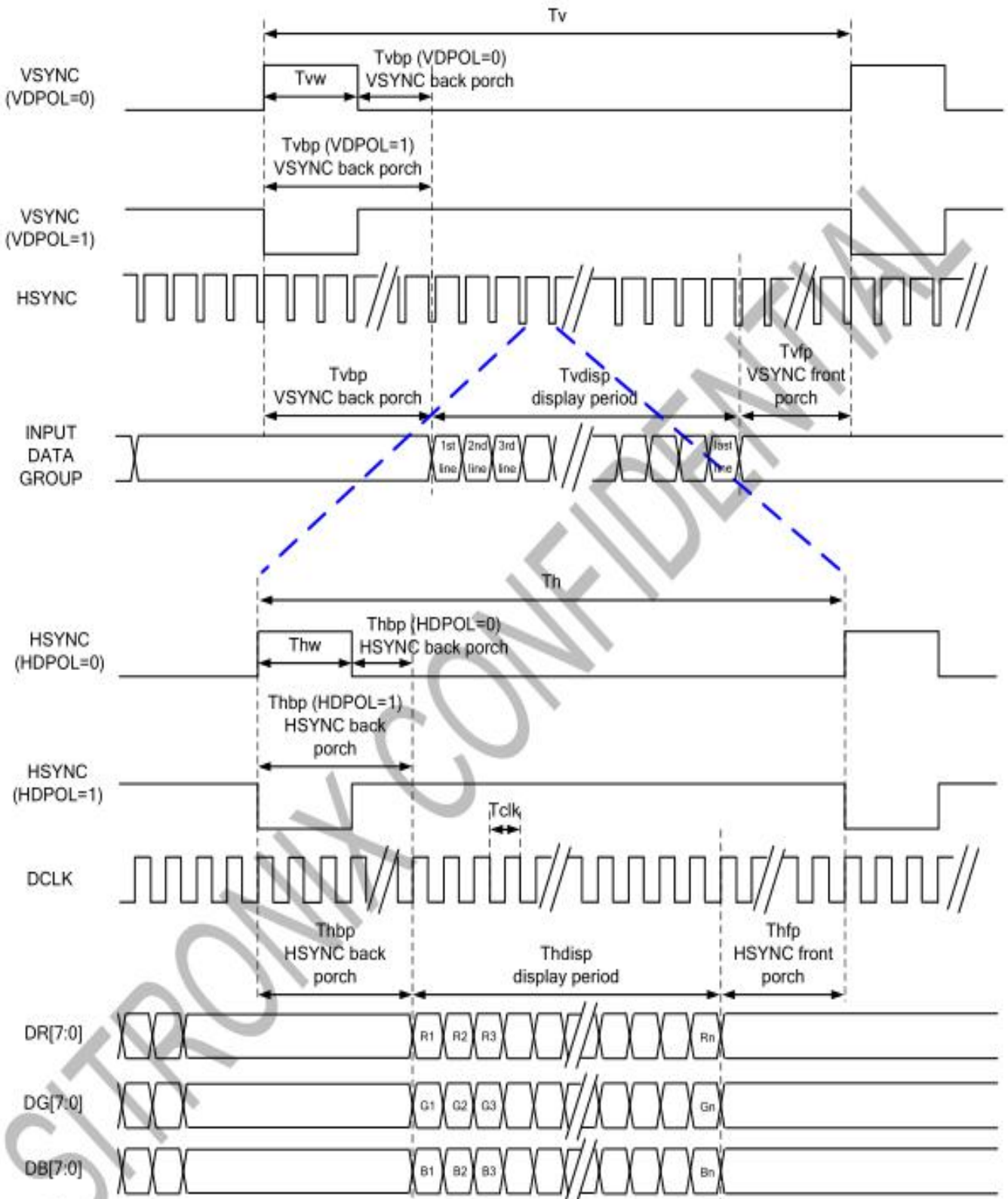
Parameter	Symbol	Condition	Min	Typ	Max	Unit	Note	
Power supply	VCC	$T_a = 25^\circ\text{C}$	3.0	3.3	3.6	V	-	
Input voltage	'H'	V_{IH}	$V_{DD} = 3.3\text{V}$	0.7VCC	-	VCC	V	-
	'L'	V_{IL}	$V_{DD} = 3.3\text{V}$	GND	-	0.3VCC	V	-



Product Specification	Model:	AWK-320240T35N10	Rev. No.	Issued Date.	Page.
			A	2023/09/06	8/24

7. Timing Characteristics

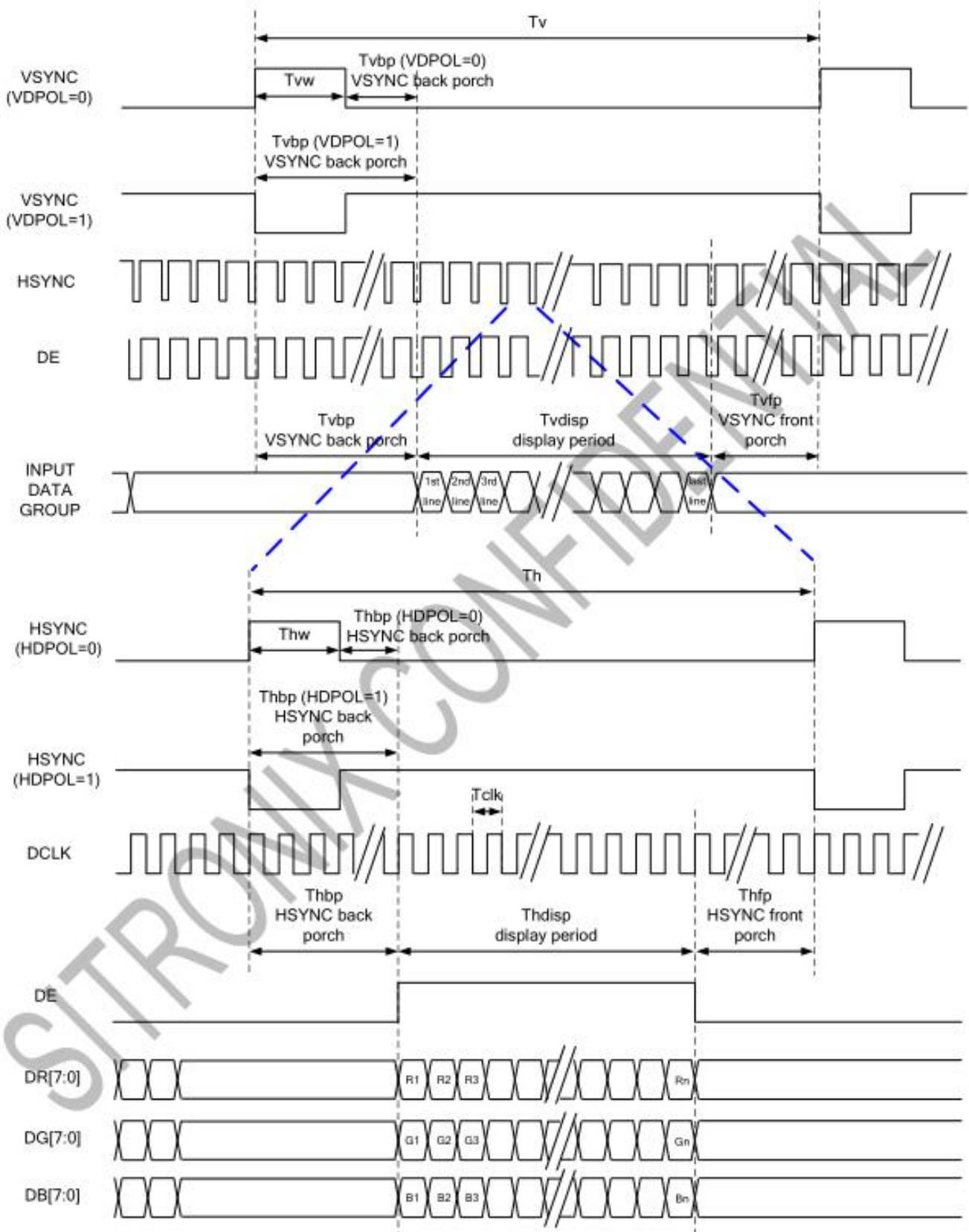
7.1 SYNC Mode





Product Specification	Model:	AWK-320240T35N10	Rev. No.	Issued Date.	Page.
			A	2023/09/06	9/24

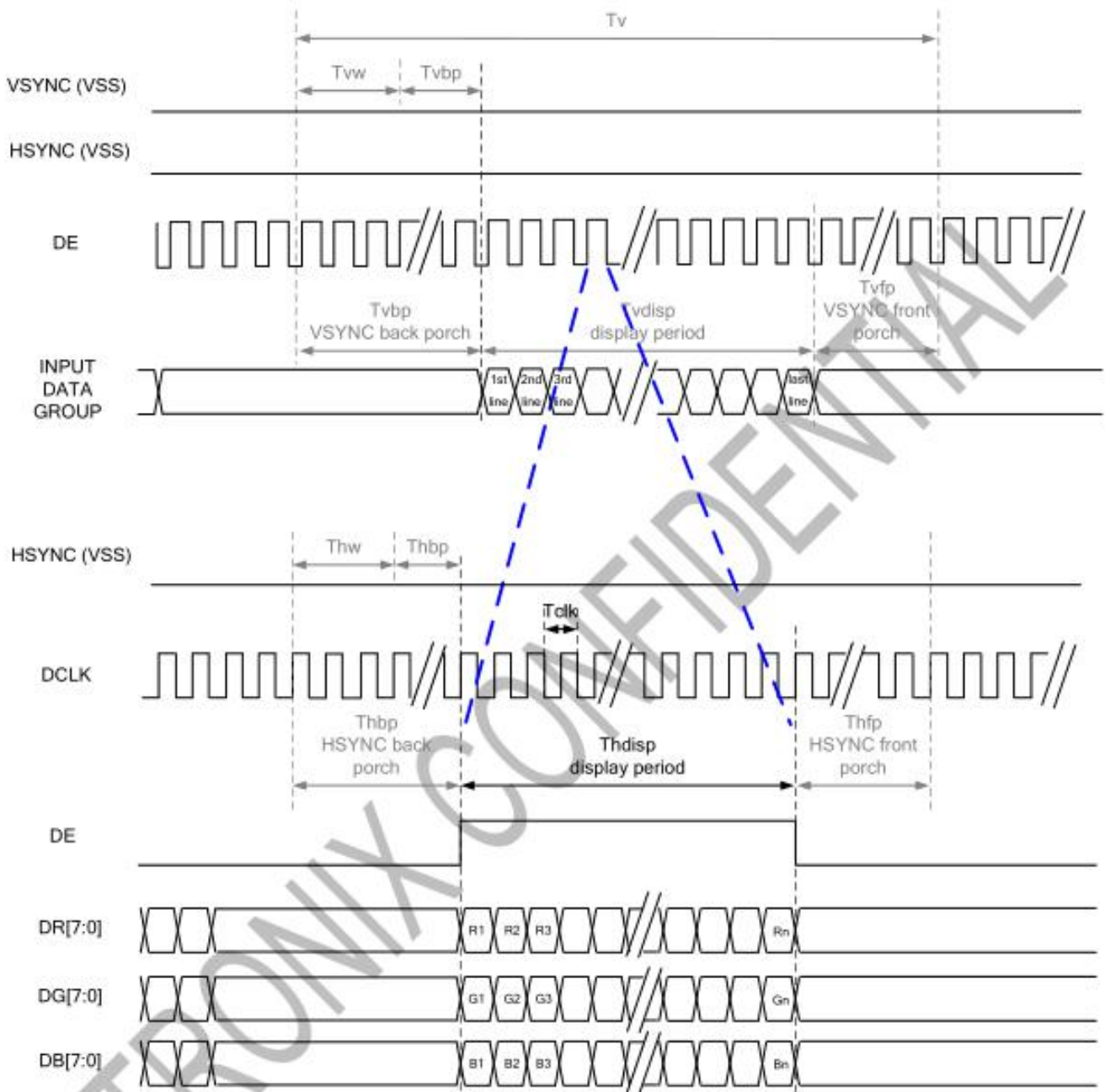
7.2 SYNC-DE Mode





Product Specification	Model:	AWK-320240T35N10	Rev. No.	Issued Date.	Page.
			A	2023/09/06	10/24

7.3 DE Mode



RGB Mode Selection Table	DCLK	HSYNC	VSYNC	DE
SYNC - DE Mode	Input	Input	Input	Input
SYNC Mode	Input	Input	Input	GND
DE Mode	Input	GND	GND	Input

Note: "Input" means these signals are driven by host side.



Product Specification	Model:	AWK-320240T35N10	Rev. No.	Issued Date.	Page.
			A	2023/09/06	11/24

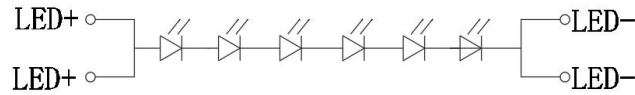
7.4 Parallel 24bit RGB Input Timing Table

Parallel 24-bit RGB Input Timing Table							
Item	Symbol	Min.	Typ.	Max.	Unit	Note	
DCLK Frequency	Fclk	5	6	8	MHz		
DCLK Period	Tclk	125	167	200	ns		
HSYNC	Period Time	Th	325	371	438	DCLK	
	Display Period	Thdisp		320		DCLK	
	Back Porch	Thbp	3	43	43	DCLK	SYNC mode back porch control by H_BLANKING[7:0] setting Thbp= H_BLANKING[7:0]
	Front Porch	Thfp	2	8	75	DCLK	
	Pulse Width	Thw	2	4	43	DCLK	
VSYNC	Period Time	Tv	244	260	289	HSYNC	
	Display Period	Tvdisp		240		HSYNC	
	Back Porch	Tvbp	2	12	12	HSYNC	SYNC mode back porch control by V_BLANKING[7:0] setting Tvbp= V_BLANKING[7:0]
	Front Porch	Tvfp	2	8	37	HSYNC	
	Pulse Width	Tvw	2	4	12	HSYNC	



Product Specification	Model:	AWK-320240T35N10	Rev. No.	Issued Date.	Page.
			A	2023/09/06	12/24

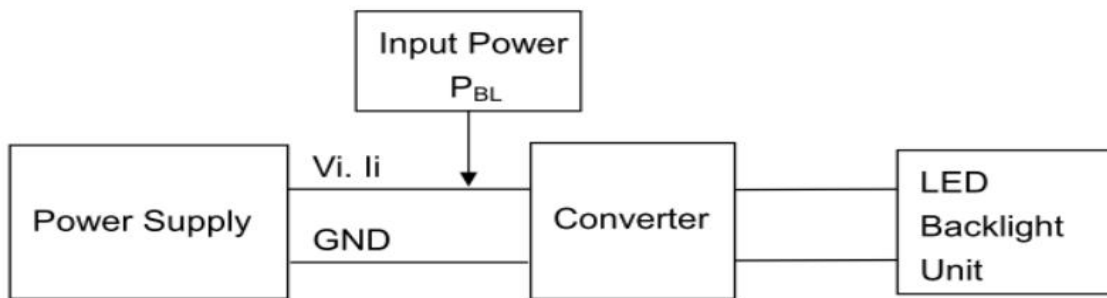
8. Backlight Characteristic



Item	Symbol	Min	Typ	Max	Unit	Note
Supply voltage	Vf	16.8	18	21	V	Note 1
Supply Current	If	-	20	-	mA	Note 2
Life Time	-	-	30000	-	Hr	Note 3,4

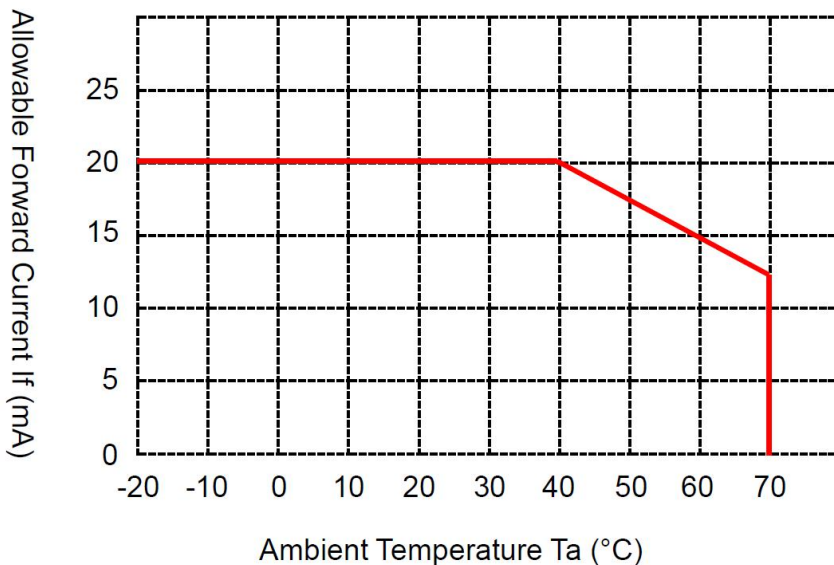
Note 1: The LED Supply Voltage is defined by the number of LED at $T_a=25^{\circ}\text{C}$ and $I_f = 20\text{mA}$.

Note 2: LED current is measured by utilizing a high frequency current meter as shown below:



Note 3: The “LED life time” is defined as the module brightness decrease to 50% original brightness at $T_a=25^{\circ}\text{C}$ and $I_f = 20\text{mA}$. The LED lifetime could be decreased if operating I_f is larger than 20mA.

Note 4: LED light bar circuit:



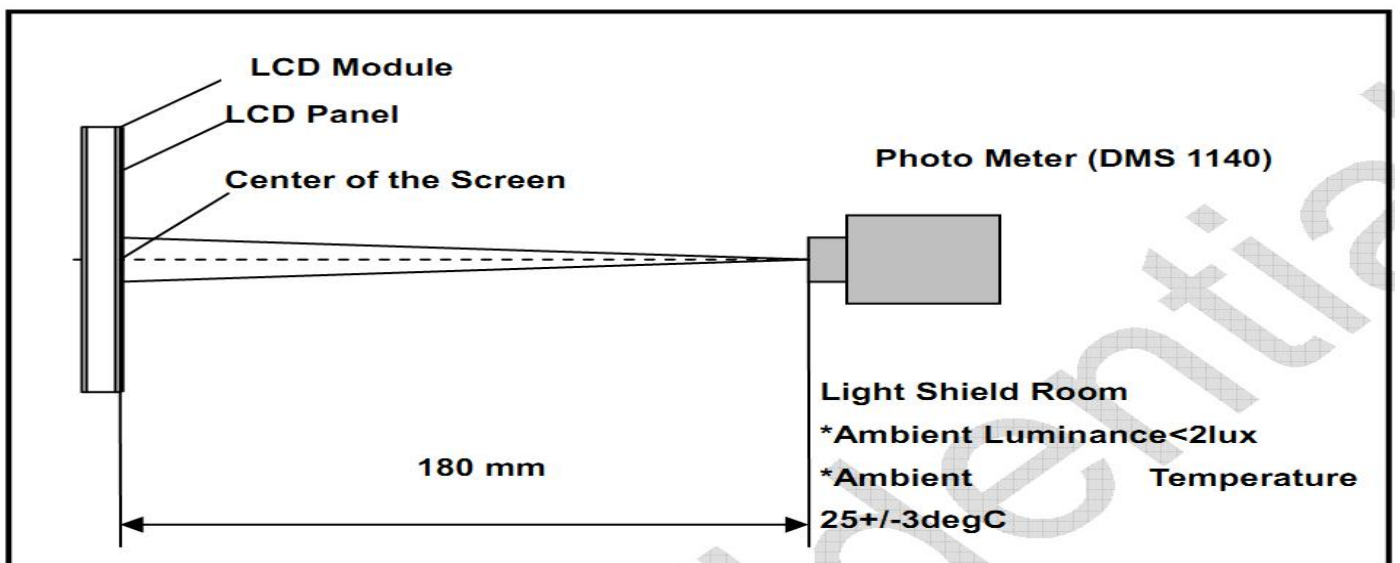


Product Specification	Model:	AWK-320240T35N10	Rev. No.	Issued Date.	Page.
			A	2023/09/06	13/24

9. Optical Characteristics

Item	Symbol	Condition	Min.	Typ.	Max.	Unit	Note
Brightness	Bp	$\theta=0^\circ$	400	500	-	Cd/m ²	1
Uniformity	ΔBp	$\Phi=0^\circ$	75	80	-	%	1,2
Viewing Angle	3:00	$Cr \geq 10$	70	80	-	Deg	3
	6:00		70	80	-		
	9:00		70	80	-		
	12:00		70	80	-		
Contrast Ratio	Cr	$\theta=0^\circ$	900	1200	-	-	4
Response Time	T_r+T_f	$\Phi=0^\circ$	-	30	40	ms	5
Color of CIE Coordinate	W	x	0.2560	0.3060	0.3560	-	1,6
		y	0.2979	0.3479	0.3979	-	
	R	x	0.5559	0.6059	0.6559	-	
		y	0.3149	0.3649	0.4149	-	
	G	x	0.2993	0.3493	0.3993	-	
		y	0.5603	0.6103	0.6603	-	
	B	x	0.0839	0.1339	0.1839	-	
		y	0.0278	0.0778	0.1278	-	
NTSC Ratio	S	-	55	60	-	%	-

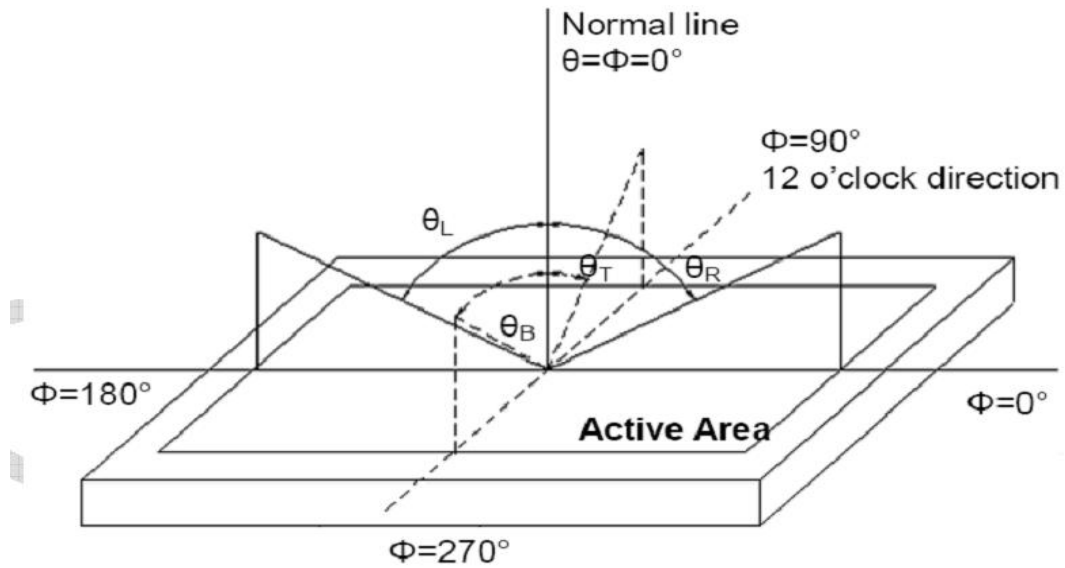
Note (1) Measurement Setup: The LCD module should be stabilized at given temp. 25°C for 15 minutes to avoid abrupt temperature change during measuring. In order to stabilize the luminance, the measurement should be executed after lighting backlight for 15 minutes in a windless room.





Product Specification	Model:	AWK-320240T35N10	Rev. No.	Issued Date.	Page.
			A	2023/09/06	14/24

Note (2) Definition of Viewing Angle



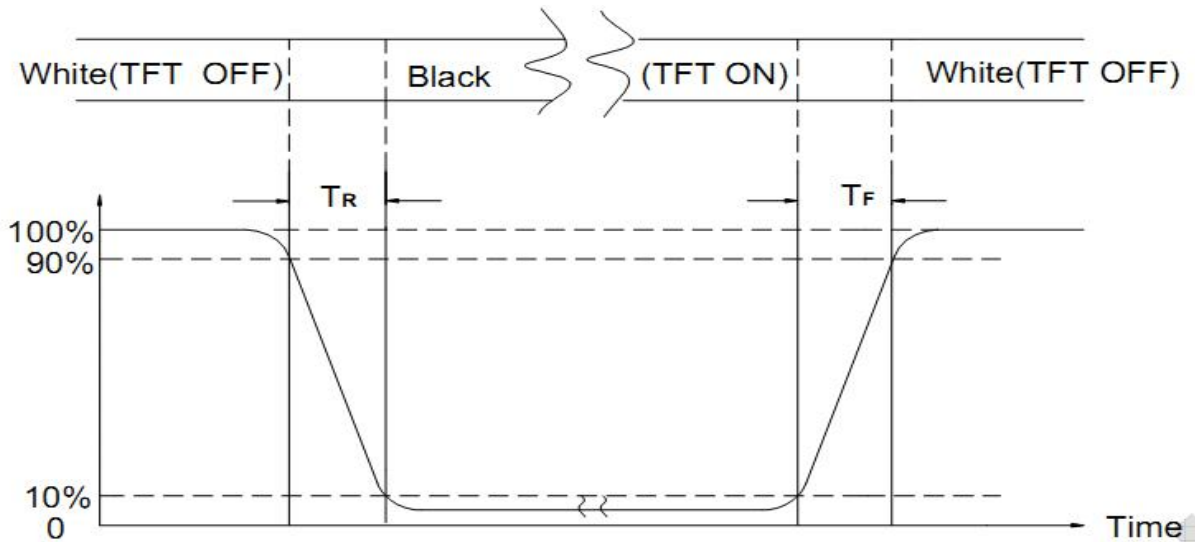
Note (3) Definition of Contrast Ratio (CR)

The contrast ratio can be calculated by the following expression

$$\text{Contrast Ratio (CR)} = L_{255} / L_0$$

L255: Luminance of gray level 255, L0: Luminance of gray level 0

Note (4) Definition of response time



Note (5) Definition of Transmittance (Module is without signal input)

$$\text{Transmittance} = \text{Center Luminance of LCD} / \text{Center Luminance of Back Light} \times 100\%$$

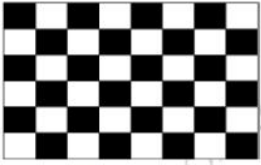

Note (6) Definition of color chromaticity (CIE1931)

Color coordinates measured at the center point of LCD



Product Specification	Model:	AWK-320240T35N10	Rev. No.	Issued Date.	Page.
			A	2023/09/06	15/24

10. Reliability Test Conditions and Methods

No.	Test Items	Test Condition	Inspection After Test
1	High Temperature Storage	85°C±2°C×96Hours	Inspection after 2~4hours storage at room temperature, the samples should be free from defects: 1, Air bubble in the LCD. 2, Seal leak. 3, Non-display. 4, Missing segments. 5, Glass crack. 6, Current IDD is twice higher than initial value. 7, The surface shall be free from damage. 8, The electric characteristic requirements shall be satisfied.
2	Low Temperature Storage	-30°C±2°C×96Hours	
3	High Temperature Operating	85°C±2°C×96Hours	
4	Low Temperature Operating	-30°C±2°C×96Hours	
5	Temperature Cycle(Storage)	$ \begin{array}{c} -20^{\circ}\text{C} \xleftrightarrow{(30\text{min})} 25^{\circ}\text{C} \xleftrightarrow{(5\text{min})} 70^{\circ}\text{C} \\ \xleftrightarrow{(30\text{min})} \\ \text{1 cycle} \\ \text{Total 10cycle} \end{array} $	
6	Damp Proof Test (Storage)	50°C±5°C×90%RH×96Hours	
7	Vibration Test	Frequency:10Hz~55Hz~10Hz Amplitude:1.5mm X,Y,Z direction for total 3hours (packing condition test will be tested by a carton)	
8	Drooping Test	Drop to the ground from 1M height one time every side of carton. (packing condition test will be tested by a carton)	
9	ESD Test	Voltage:±8KV,R:330Ω,C:150PF,Air Mode,10times	
10	Image Sticking Test	25 ± 2°C Operation with test pattern sustained for 2 hrs, then change to gray pattern immediately. After 5 mins, the mura must be disappeared completely  	

REMARK:

- The Test samples should be applied to only one test item.
- Sample side for each test item is 5~10pcs.
- For Damp Proof Test, Pure water(Resistance> 10MΩ)should be used.
- In case of malfunction defect caused by ESD damage, if it would be recovered to normal state after resetting, it would be judge as a good part.
- EL evaluation should be accepted from reliability test with humidity and temperature: Some defects such as black spot/blemish can happen by natural chemical reaction with humidity and Fluorescence EL has.
- Failure Judgment Criterion: Basic Specification Electrical Characteristic, Mechanical Characteristic, Optical Characteristic.



<i>Product Specification</i>	<i>Model:</i>	<i>AWK-320240T35N10</i>	<i>Rev. No.</i>	<i>Issued Date.</i>	<i>Page.</i>
			<i>A</i>	<i>2023/09/06</i>	<i>16/24</i>

11. Inspection Standard

11.1 Scope

Specifications contain

11.1.1 Display Quality Evaluation

11.1.2 Mechanics Specification

11.2 Sampling Plan

Unless there is other agreement, the sampling plan for incoming inspection shall follow MIL-STD-105E.

11.2.1 Lot size: Quantity per shipment as one lot (different model as different lot).

11.2.2 Sampling type: Normal inspection, single sampling.

11.2.3 Sampling level: Level II.

11.2.4 AQL: Acceptable Quality Level

Major defect: AQL=0.65

Minor defect: AQL=1.5

11.3 Panel Inspection Condition

11.3.1 Environment:

Room Temperature: 25±5°C.

Humidity: 65±5% RH.

Illumination: 300 ~ 700 Lux.

11.3.2 Inspection Distance:

35±5 cm

11.3.3 Inspection Angle:

The vision of inspector should be perpendicular to the surface of the Module.

11.3.4 Inspection time:

Perceptibility Test Time: 20 seconds max.



Product Specification	Model:	AWK-320240T35N10	Rev. No.	Issued Date.	Page.
			A	2023/09/06	17/24

11.4 Inspection Plan

Class	Item	Judgment	Class
Packing & Indicate	1. Outside and inside package.	"MODEL NO.", "LOT NO." and "QUANTITY" should indicate on the package.	Minor
	2. Model mixed and quantity.	Other model mixed Quantity short or over	Major
	3. Product indication.	"MODEL NO." should indicate on the product.	Major
Assembly	4. Dimension, LCD glass scratch and scribe defect.	According to specification or drawing.	Major
Appearance	5. Viewing area.	Polarizer edge or LCD's sealing line is visible in the viewing area.....Rejected.	Minor
	6. Blemish, black spot, white spot in the LCD and LCD glass cracks.	According to standard of visual inspection.(inside viewing area)	Minor
	7. Blemish, black spot, white spot and scratch on the polarizer.	According to standard of visual inspection.(inside viewing area)	Minor
	8. Bubble in polarizer.	According to standard of visual inspection.(inside viewing area)	Minor
	9. LCD's rainbow color.	Strong deviation color (or newton ring) of LCD.....Rejected. Or according to limited sample.(if needed, and inside viewing area)	Minor
Electrical	10. Electrical and optical characteristics.(contrast Vop chromaticity....etc)	According to specification or drawing.(inside viewing area)	Major
	11. Missing line.	Missing dot line character	Major
	12.Short circuit. Wrong pattern display.	No display, wrong pattern display, current consumption. Out of specification	Major
	13. Dot defect.(for color and TFT)	According to standard of visual Inspection.	Minor



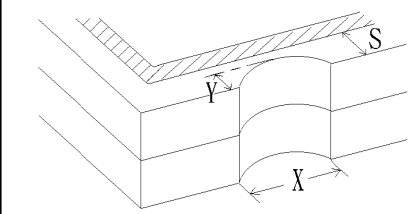
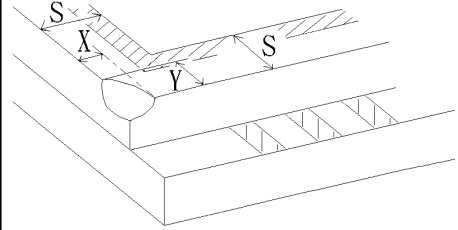
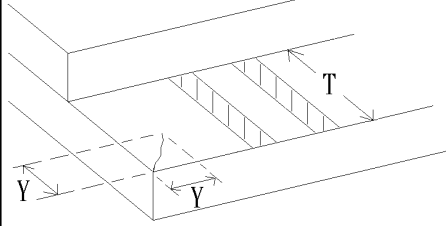
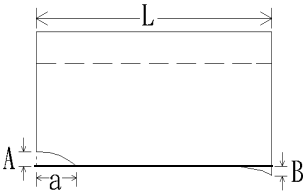
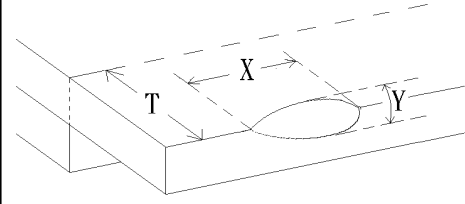
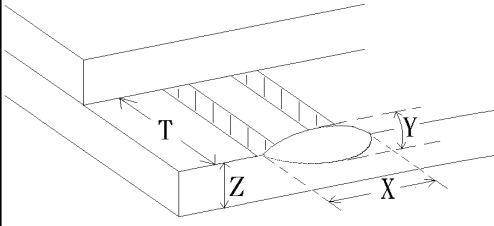
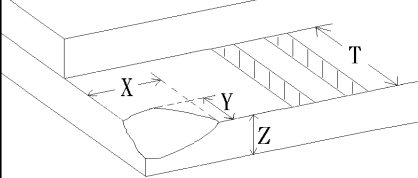
Product Specification	Model:	AWK-320240T35N10	Rev. No.	Issued Date.	Page.
			A	2023/09/06	18/24

11.5 Standard Of Visual Inspection

No.	Class	Item	Judgment																				
11.5.1	Minor	Black and white spot. Foreign materiel. Dust. Blemish. Scratch.	<p>(A) Round type: Unit: mm</p> <table border="1"> <tr> <td>Diameter (mm.)</td> <td>Acceptable Q'ty</td> </tr> <tr> <td>$\Phi \leq 0.2$</td> <td>Disregard</td> </tr> <tr> <td>$0.2 < \Phi \leq 0.25$</td> <td>3(Distance>5mm)</td> </tr> <tr> <td>$0.25 < \Phi$</td> <td>0</td> </tr> </table> <p>Note: $\Phi = (\text{length} + \text{width}) / 2$</p> <p>(B) Linear type: Unit: mm</p> <table border="1"> <tr> <td>Length</td> <td>Width (mm.)</td> <td>Acceptable Q'ty</td> </tr> <tr> <td>--</td> <td>$W \leq 0.03$</td> <td>Disregard</td> </tr> <tr> <td>$L \leq 5.0$</td> <td>$0.03 < W \leq 0.07$</td> <td>2(Distance>5mm)</td> </tr> <tr> <td>--</td> <td>$0.07 < W$</td> <td>FOLLOW ROUND TYPE</td> </tr> </table>	Diameter (mm.)	Acceptable Q'ty	$\Phi \leq 0.2$	Disregard	$0.2 < \Phi \leq 0.25$	3(Distance>5mm)	$0.25 < \Phi$	0	Length	Width (mm.)	Acceptable Q'ty	--	$W \leq 0.03$	Disregard	$L \leq 5.0$	$0.03 < W \leq 0.07$	2(Distance>5mm)	--	$0.07 < W$	FOLLOW ROUND TYPE
Diameter (mm.)	Acceptable Q'ty																						
$\Phi \leq 0.2$	Disregard																						
$0.2 < \Phi \leq 0.25$	3(Distance>5mm)																						
$0.25 < \Phi$	0																						
Length	Width (mm.)	Acceptable Q'ty																					
--	$W \leq 0.03$	Disregard																					
$L \leq 5.0$	$0.03 < W \leq 0.07$	2(Distance>5mm)																					
--	$0.07 < W$	FOLLOW ROUND TYPE																					
11.5.2	Minor	Dent on polarizer.	<p style="text-align: right;">Unit: mm.</p> <table border="1"> <tr> <td>Diameter</td> <td>Acceptable Q'ty</td> </tr> <tr> <td>$\Phi \leq 0.2$</td> <td>Disregard</td> </tr> <tr> <td>$0.2 < \Phi \leq 0.5$</td> <td>2(Distance>5mm)</td> </tr> <tr> <td>$0.5 < \Phi$</td> <td>0</td> </tr> </table>	Diameter	Acceptable Q'ty	$\Phi \leq 0.2$	Disregard	$0.2 < \Phi \leq 0.5$	2(Distance>5mm)	$0.5 < \Phi$	0												
Diameter	Acceptable Q'ty																						
$\Phi \leq 0.2$	Disregard																						
$0.2 < \Phi \leq 0.5$	2(Distance>5mm)																						
$0.5 < \Phi$	0																						
11.5.3	Minor	Bubble on polarizer.	<p style="text-align: right;">Unit: mm.</p> <table border="1"> <tr> <td>Diameter</td> <td>Acceptable Q'ty</td> </tr> <tr> <td>$\Phi \leq 0.2$</td> <td>Disregard</td> </tr> <tr> <td>$0.2 < \Phi \leq 0.5$</td> <td>2(Distance>5mm)</td> </tr> <tr> <td>$0.5 < \Phi$</td> <td>0</td> </tr> </table>	Diameter	Acceptable Q'ty	$\Phi \leq 0.2$	Disregard	$0.2 < \Phi \leq 0.5$	2(Distance>5mm)	$0.5 < \Phi$	0												
Diameter	Acceptable Q'ty																						
$\Phi \leq 0.2$	Disregard																						
$0.2 < \Phi \leq 0.5$	2(Distance>5mm)																						
$0.5 < \Phi$	0																						
11.5.4	Minor	Dot defect	<table border="1"> <tr> <td>Items</td> <td>Acceptable Q'ty</td> </tr> <tr> <td>Bright dot</td> <td>$N \leq 2$</td> </tr> <tr> <td>Dark dot</td> <td>$N \leq 2$</td> </tr> <tr> <td>Total dot</td> <td>$N \leq 3$</td> </tr> </table> <p>Pixel define :</p> <p>Note1: The definition of dot: The size of a defective dot over 1/2 of whole dot is regarded as one defective dot. Note 2: Bright dot: Dots appear bright and unchanged in size in which LCD panel is displaying under black pattern. Note 3: The bright dot defect must be visible through 2% ND filter Note 4: Dark dot: Dots appear dark and unchanged in size in which LCD panel is displaying under pure red, green, blue pattern.</p>	Items	Acceptable Q'ty	Bright dot	$N \leq 2$	Dark dot	$N \leq 2$	Total dot	$N \leq 3$												
Items	Acceptable Q'ty																						
Bright dot	$N \leq 2$																						
Dark dot	$N \leq 2$																						
Total dot	$N \leq 3$																						



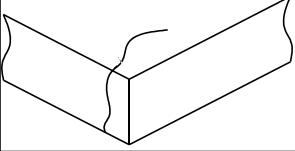
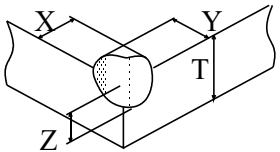
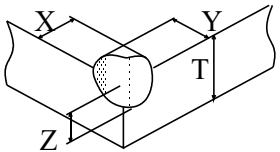
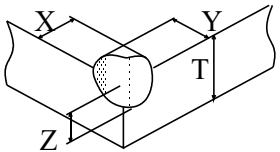
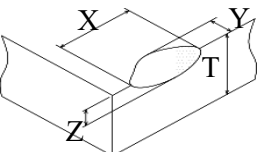
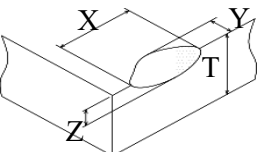
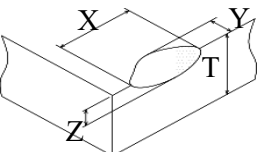
Product Specification	Model:	AWK-320240T35N10	Rev. No.	Issued Date.	Page.
			A	2023/09/06	19/24

No.	Class	Item	Judgment
11.5.5	Minor	LCD glass chipping.	 $Y > S$ Reject
11.5.6	Minor	LCD glass chipping.	 $X \text{ or } Y > S$ Reject
11.5.7	Major	LCD glass crack.	 $Y > (1/2) T$ Reject
11.5.8	Major	LCD glass scribe defect.	 <p>1. $a > L/3$, $A > 1.5\text{mm}$ Reject 2. B : According to dimension</p>
11.5.9	Minor	LCD glass chipping. (on the terminal area)	 $\Phi = (x+y)/2 > 2.5\text{mm}$ Reject
11.5.10	Minor	LCD glass chipping. (on the terminal surface)	 $Y > (1/3) T$ Reject
11.5.11	Minor	LCD glass chipping.	 $Y > T$ Reject



Product Specification	Model:	AWK-320240T35N10	Rev. No.	Issued Date.	Page.
			A	2023/09/06	20/24

11.6. Inspection Standard Of Touch Panel

No.	Class	Items	Judgment			
11.6.1	Major	Touch panel crack.	 <p style="text-align: right;">Reject</p>			
11.6.2	Minor	Touch panel chipping.	<table border="1" style="width: 100%;"> <tr> <td style="text-align: center;">  </td> <td style="text-align: center;"> $X \leq 1\text{mm}, Y \leq 1\text{mm}, Z \leq 1/2T$ </td> <td style="text-align: center;">Accept</td> </tr> </table> <p>1) Corner fragment in the golden finger that seriously affects the product function is regarded as a defect. 2) Corner fragment in the circuit that seriously affects product function is regarded as a defect.</p>		$X \leq 1\text{mm}, Y \leq 1\text{mm}, Z \leq 1/2T$	Accept
			$X \leq 1\text{mm}, Y \leq 1\text{mm}, Z \leq 1/2T$	Accept		
Edge.	<table border="1" style="width: 100%;"> <tr> <td style="text-align: center;">  </td> <td style="text-align: center;"> $X \leq 1\text{mm}, Y \leq 1\text{mm}, Z \leq 1/2T$ </td> <td style="text-align: center;">Accept</td> </tr> </table> <p>1) Side fragment in the golden finger that seriously affects the product function is regarded as a defect. 2) Side fragment in the circuit that seriously affects product function is regarded as a defect.</p>		$X \leq 1\text{mm}, Y \leq 1\text{mm}, Z \leq 1/2T$	Accept		
	$X \leq 1\text{mm}, Y \leq 1\text{mm}, Z \leq 1/2T$	Accept				
11.6.3	Minor	Scratch. Dust and foreign materiel. (linear type)	$W \leq 0.03$ Accept			
			$0.03\text{mm} < W \leq 0.07\text{mm}, L \leq 5.0\text{mm}$ (Distance > 5mm) Accept 2 ea Max.			
			$W > 0.07\text{mm}$ Reject			
11.6.4	Minor	Scratch. Dust and foreign materiel (round type: $\phi = (\text{length} + \text{width}) / 2$)	$\Phi \leq 0.2\text{mm}$ Accept			
			$0.2\text{mm} < \Phi \leq 0.25\text{mm}$ (Distance > 5mm) Accept 1 ea Max.			
			$\Phi > 0.25\text{mm}$ Reject			
11.6.5	Minor	Touch panel dent / fish eyes.	$\Phi \leq 0.2\text{mm}$ Accept			
			$0.2\text{mm} < \Phi \leq 0.5\text{mm}$ (Distance > 5mm) Accept 2 ea Max.			
			$\Phi > 0.5\text{mm}$ Reject			
11.6.6	Minor	Touch panel air bubble.	$\Phi \leq 0.2\text{mm}$ Accept			
			$0.2\text{mm} < \Phi \leq 0.5\text{mm}$ (Distance > 5mm) Accept 2 ea Max.			
			$\Phi > 0.5\text{mm}$ Reject			
11.6.7	Minor	Touch panel printing area scratch.	$W \leq 0.03\text{mm}$ Accept			
			$0.03\text{mm} < W \leq 0.05\text{mm}, L \leq 5.0\text{mm}$ (Distance > 5mm) Accept 2 ea Max.			
			$W > 0.05$ (W > 0.05 follow 11.6.4 round type) Reject			
11.6.8	Minor	Touch panel white haze mark / dust.	Can not be removed Reject			



<i>Product Specification</i>	<i>Model:</i>	<i>AWK-320240T35N10</i>	<i>Rev. No.</i>	<i>Issued Date.</i>	<i>Page.</i>
			<i>A</i>	<i>2023/09/06</i>	<i>21/24</i>

12. Handling Precautions

12.1 Mounting Method

The LCD panel of ACROWISE TFT module consists of two thin glass plates with polarizes which easily be damaged. And since the module in so constructed as to be fixed by utilizing fitting holes in the printed circuit board.

Extreme care should be needed when handling the LCD modules.

12.2 Caution of LCD Handling And Cleaning

When cleaning the display surface, Use soft cloth with solvent

[Recommended below] and wipe lightly

- Isopropyl alcohol
- Ethyl alcohol

Do not wipe the display surface with dry or hard materials that will damage the polarizer surface.

Do not use the following solvent:

- Water
- Aromatics

Do not wipe ITO pad area with the dry or hard materials that will damage the ITO patterns

Do not use the following solvent on the pad or prevent it from being contaminated:

- Soldering flux
- Chlorine (Cl) , Sulfur (S)

If goods were sent without being silicon coated on the pad, ITO patterns could be damaged due to the corrosion as time goes on.

If ITO corrosion happen by miss-handling or using some materials such as Chlorine (Cl), Sulfur (S) from customer, Responsibility is on customer.

12.3 Caution Against Static Charge

The LCD module use C-MOS LSI drivers, so we recommended that you:

Connect any unused input terminal to power or ground, do not input any signals before power is turned on, and ground your body, work/assembly areas, and assembly equipment to protect against static electricity.

12.4 Packing

- Module employs LCD elements and must be treated as such.
- Avoid intense shock and falls from a height.
- To prevent modules from degradation, do not operate or store them exposed direct to sunshine or high temperature/humidity

12.5 Caution for operation

- It is an indispensable condition to drive LCD's within the specified voltage limit since the higher



<i>Product Specification</i>	<i>Model:</i>	<i>AWK-320240T35N10</i>	<i>Rev. No.</i>	<i>Issued Date.</i>	<i>Page.</i>
			<i>A</i>	<i>2023/09/06</i>	<i>22/24</i>

voltage then the limit cause the shorter LCD life.

- An electrochemical reaction due to direct current causes LCD's undesirable deterioration, so that the use of direct current drive should be avoided.
- Response time will be extremely delayed at lower temperature then the operating temperature range and on the other hand at higher temperature LCD's how dark color in them. However those phenomena do not mean malfunction or out of order with LCD's, which will come back in the specified operation temperature.
- If the display area is pushed hard during operation, some font will be abnormally displayed but it resumes normal condition after turning off once.
- Slight dew depositing on terminals is a cause for electro-chemical reaction resulting in terminal open circuit.

Usage under the maximum operating temperature, 50%Rh or less is required.

12.6 Storing

In the case of storing for a long period of time for instance, for years for the purpose or replacement use, the following ways are recommended.

- Storage in a polyethylene bag with the opening sealed so as not to enter fresh air outside in it. And with no desiccant.
- Placing in a dark place where neither exposure to direct sunlight nor light's keeping the storage temperature range.
- Storing with no touch on polarizer surface by the anything else.

[It is recommended to store them as they have been contained in the inner container at the time of delivery from us

12.7 Safety

- It is recommendable to crash damaged or unnecessary LCD's into pieces and wash off liquid crystal by either of solvents such as acetone and ethanol, which should be burned up later.
- When any liquid leaked out of a damaged glass cell comes in contact with your hands, please wash it off well with soap and water



<i>Product Specification</i>	<i>Model:</i>	<i>AWK-320240T35N10</i>	<i>Rev. No.</i>	<i>Issued Date.</i>	<i>Page.</i>
			<i>A</i>	<i>2023/09/06</i>	<i>23/24</i>

13. Precaution for Use

13.1

A limit sample should be provided by the both parties on an occasion when the both parties agreed its necessity. Judgment by a limit sample shall take effect after the limit sample has been established and confirmed by the both parties.

13.2

On the following occasions, the handing of problem should be decided through discussion and agreement between responsible of the both parties.

- When a question is arisen in this specification
- When a new problem is arisen which is not specified in this specifications
- When an inspection specifications change or operating condition change in customer is reported to ACROWISE TFT , and some problem is arisen in this specification due to the change
- When a new problem is arisen at the customer's operating set for sample evaluation in the customer site.



<i>Product Specification</i>	<i>Model:</i>	<i>AWK-320240T35N10</i>	<i>Rev. No.</i>	<i>Issued Date.</i>	<i>Page.</i>
			<i>A</i>	<i>2023/09/06</i>	<i>24/24</i>

14. Packing

TBD