



上海三木电子有限公司

San Technology (Shanghai) Co., Ltd.

SPECIFICATION FOR LCD MODULE

Customer P/N:

Santek P/N: ST1020I3WCY-RSCLW-F2

DOC. Revision: RS01

Customer Approval:

--

	SIGNATURE	DATE
PREPARED BY	Luke	2013-09-27
CHECKED BY	Natty Lee	2013-Sep-27
APROVED BY	<i>f Suzuki</i>	<i>2013-09-27</i>

Contents:

1. General Specifications	3
2. Pin Assignment	4
2.1. TFT LCD Panel Driving Section	4
2.2. CTP section	7
2.3. Backlight unit section	7
3. Operation Specifications	8
3.1. Absolute Maximum Rating	8
3.1.1 Typical Operation Conditions	9
3.1.2 Current Consumption	10
3.1.3 Backlight Driving Conditions	10
3.2 Power Sequence	11
3.3 Timing Characteristics	12
3.3.1 Timing Conditions	12
3.3.2 Timing Diagram	13
4. CTP General Specification and Characteristics	21
4.1 Product Type	21
4.2 Material Characteristics	21
4.3 Basic Characteristics	21
4.4 Operating and Storage	21
4.5 Electrical Characteristics	22
4.6 Mechanical Characteristics	22
4.7 Optical Characteristics	22
4.8 Housing Design Guide	23
4.9 Software Design Guide	23
5. Optical Specifications	23
6. Reliability Test Items	28
7. General Precautions	29
7.1 Safety	29
7.2 Handling	29
7.3 Static Electricity	29
7.4 Storage	29
7.5 Cleaning	29
8. Mechanical Drawing	30
9. Package Drawing	31
9.1 Packaging Material Table	31
9.2 Packaging Quantity	31
9.3 Packaging Drawing	32

1. General Specifications

No.	Item	Specification	Remark
1	LCD size	10.2 inch(Diagonal)	
2	Driver element	a-Si TFT active matrix	
3	Resolution	800 × 3(RGB) × 480	
4	Display mode	Normally white, Transmissive	
5	Dot pitch	0.0925(W) × 0.276 (H) mm	
6	Active area	222.0(W) × 132.8(H) mm	
7	Module size	263.0(W)×173.4(H)×10.83(D) mm	Note 1
8	Surface Hardness	more than 5H	
9	Touch Points	5 points	
10	Color arrangement	RGB stripe	
11	Interface	Digital	
12	Backlight power consumption	9.0W(Typ.)	
13	Panel power consumption	0.25W(Typ.)	
14	Weight	TBD	

Note 1: Refer to Mechanical Drawing.

2. Pin Assignment

2.1. TFT LCD Panel Driving Section

FPC connector is used for the module electronics interface. The recommended model is "196013-30041" manufactured by P-TWO, and TTL or LVDS interface T-CON board is selectable.

Pin No.	Symbol	I/O	Function	Remark
1	POL	I	Polarity selection	
2	STVD	I/O	Vertical start pulse input when U/D= H	Note 1
3	OEV	I	Output enable	
4	CKV	I	Vertical clock	
5	STVU	I/O	Vertical start pulse input when U/D= L	Note 1
6	GND	P	Power ground	
7	EDGSL	I	Select rising edge or rising/falling edge	
8	V _{CC}	P	Power supply for digital circuit	
9	V ₉	I	Gamma voltage level 9	
10	V _{GL}	P	Gate OFF voltage	
11	V ₂	I	Gamma voltage level 2	
12	V _{GH}	P	Gate ON voltage	
13	V ₆	I	Gamma voltage level 6	
14	U/D	I	Up/down selection	Note 1,2
15	V _{COM}	I	Common voltage	
16	GND	P	Power ground	
17	AV _{DD}	P	Power supply for analog circuit	
18	V ₁₄	I	Gamma voltage level 14	
19	V ₁₁	I	Gamma voltage level 11	
20	V ₈	I	Gamma voltage level 8	
21	V ₅	I	Gamma voltage level 5	
22	V ₃	I	Gamma voltage level 3	
23	GND	P	Power ground	
24	R ₅	I	Red data(MSB)	
25	R ₄	I	Red data	
26	R ₃	I	Red data	
27	R ₂	I	Red data	

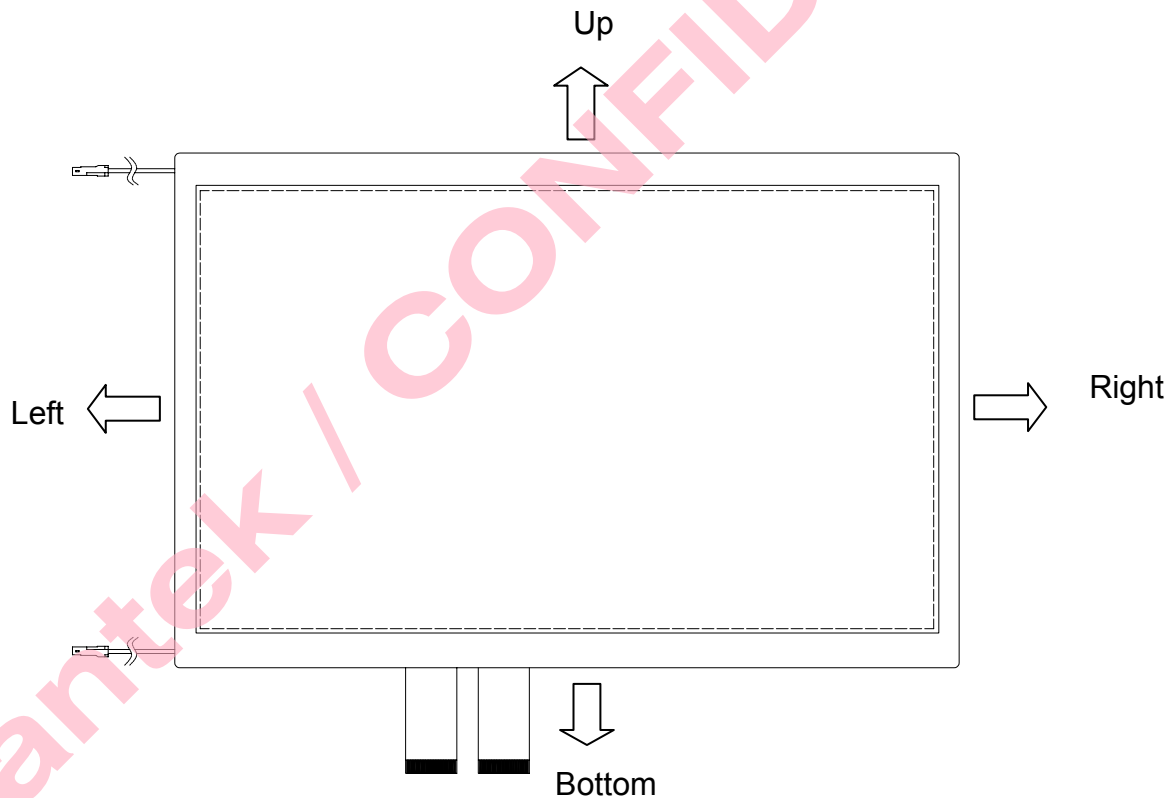
28	R1	I	Red data	
29	R0	I	Red data(LSB)	
30	GND	P	Power ground	
31	GND	P	Power ground	
32	G5	I	Green data(MSB)	
33	G4	I	Green data	
34	G3	I	Green data	
35	G2	I	Green data	
36	G1	I	Green data	
37	G0	I	Green data(LSB)	
38	STHL	I/O	Horizontal start pulse input when R/L = L	Note 1
39	REV	P	Control signal are inverted or no	Note 3
40	GND	I	Power ground	
41	DCLK	I	Sample clock	
42	V _{CC}	P	Power supply for digital circuit	
43	STHR	I/O	Horizontal Start pulse input when R/L = H	Note 1
44	LD	I	Latches the polarity of outputs and switches the now data to outputs	
45	B5	I	Blue data (MSB)	
46	B4	I	Blue data	
47	B3	I	Blue data	
48	B2	I	Blue data	
49	B1	I	Blue data	
50	B0	I	Blue data (LSB)	
51	R/L	I	Right/ left selection	Note 1,2
52	V1	I	Gamma voltage level 1	
53	V4	I	Gamma voltage level 4	
54	V7	I	Gamma voltage level 7	
55	V10	I	Gamma voltage level 10	
56	V12	I	Gamma voltage level 12	
57	V13	I	Gamma voltage level 13	
58	AV _{DD}	P	Voltage for analog circuit	
59	GND	P	Power ground	
60	V _{COM}	I	Common voltage	

I: input, O: output, P: Power

Note 1: Selection of scanning mode

Setting of scan control input		IN/OUT state for start pulse				Scanning direction
U/D	R/L	STVD	STVU	STHR	STHL	
GND	V _{CC}	O	I	I	O	Up to down, left to right
V _{CC}	GND	I	O	O	I	Down to up, right to left
GND	GND	O	I	O	I	Up to down, right to left
V _{CC}	V _{CC}	I	O	I	O	Down to up, left to right

Note 2: Definition of scanning direction.
Refer to the figure as below:



Note 3: When REV="L" , normally
REV="H" , these data will be inverted.

2.2 CTP Section

The recommended connector type is FH19SC-6S-0.5SH(05), manufactured by Hirose.

PIN	Signal	Description
1	GND	Ground
2	RESET	
3	SDA	I2C Serial Data Input And Output.
4	SCL	I2C Serial Clock Input.
5	INT	An interrupt signal to inform the host processor that touch data is ready for read
6	VDD	Supply Voltage

2.3. Backlight Unit Section

LED Light Bar connector is used for the the integral backlight system. The recommended model is BHSR-02VS-1" manufactured by JST .

Pin No.	Symbol	I/O	Function	Remark
1	V _{LED+}	P	Power for LED backlight anode	Pink
2	V _{LED-}	P	Power for LED backlight cathode	White
3	V _{LED+}	P	Power for LED backlight anode	Pink
4	V _{LED-}	P	Power for LED backlight cathode	White

3. Operation Specifications

3.1. Absolute Maximum Rating

(Note 2)

Item	Symbol	Values		Unit	Remark
		Min.	Max.		
Power voltage	V _{CC}	-0.3	5	V	
	AV _{DD}	-0.5	12	V	
	V _{GH}	13	19	V	
	V _{GL}	-12	-2	V	
	V _{GH} -V _{GL}	-	31	V	
Input signal voltage	V1~V7	0.4 AV _{DD}	AV _{DD} -0.1	V	Note 1
	V8~V14	-0.3	0.6AV _{DD}	V	
Operation temperature	T _{OP}	-20	70	°C	
Storage temperature	T _{ST}	-30	80	°C	
LED Reverse Voltage	V _r	-	0.8	V	Each LED Note 3
LED Reverse Current	I _r	-	20	mA	Each LED

Note 1: AV_{DD} - 0.1 ≥ V1 ≥ V2 ≥ V3 ≥ V4 ≥ V5 ≥ V6 ≥ V7 ≥ V8 ≥ V9 ≥ V10 > V11 ≥ V12 ≥ V13 ≥ V14 ≥ AV_{SS} + 0.1

Note 2: The absolute maximum rating values of the module should not be exceeded. Once exceeded absolute maximum rating values, the characteristics of the module may not be recovered. Even in an extreme condition, may result in module permanently destroyed.

Note 3: Vr conditions: Zener Diode 20mA.

3.1.1 Typical Operation Conditions

(Note 1)

Item	Symbol	Values			Unit	Remark
		Min.	Typ.	Max.		
Power voltage	V _{CC}	3.0	3.3	3.6	V	
	A _{VDD}	9.0	9.2	9.4	V	
	V _{GH}	15.3	16.0	16.7	V	
	V _{GL}	-7.7	-7.0	-6.3	V	
Input signal voltage	V _{COM}	3.65	3.85	4.05	V	(V1+V14)/2 =4.5V
	V1~V7	0.4 A _{VDD}		A _{VDD} -0.1	V	
	V8~V14	0.1	-	0.6 A _{VDD}	V	
Input logic high voltage	V _{IH}	0.7V _{CC}	-	V _{CC}	V	
Input logic low voltage	V _{IL}	0	-	0.3V _{CC}	V	

Note 1: Be sure to apply GND, V_{CC} and V_{GL}, to the LCD first, and then apply V_{GH}.

3.1.2 Current Consumption

Item	Symbol	Values			Unit	Remark
		Min.	Typ.	Max.		
Current for Driver	I_{GH}	-	0.3	0.5	mA	$V_{GH} = 16V$
	I_{GL}	-	0.2	1.0	mA	$V_{GL} = -7V$
	I_{CC}	-	4	10	mA	$V_{CC} = 3.3V$
	$I_{AV_{DD}}$	-	25	50	mA	$AV_{DD} = 9.2V$

3.1.3 Backlight Driving Conditions

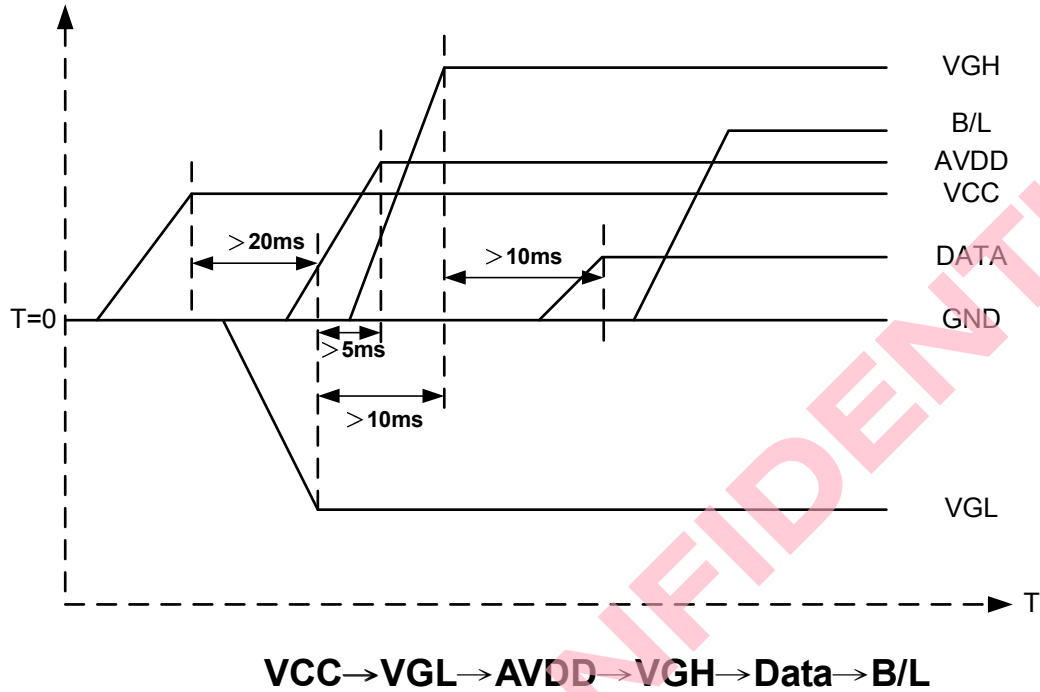
Item	Symbol	Values			Unit	Remark
		Min.	Typ	Max.		
LED forward voltage	V_L	15	18	23	V	Note 1
LED forward current	I_L	400	500	600	mA	250mA*2
LED life time		20,000	-	-	Hr	Note 2

Note 1: The LED Supply Voltage is defined by the number of LED at $T_a = 25^\circ C$ and $I_L = 500mA$.

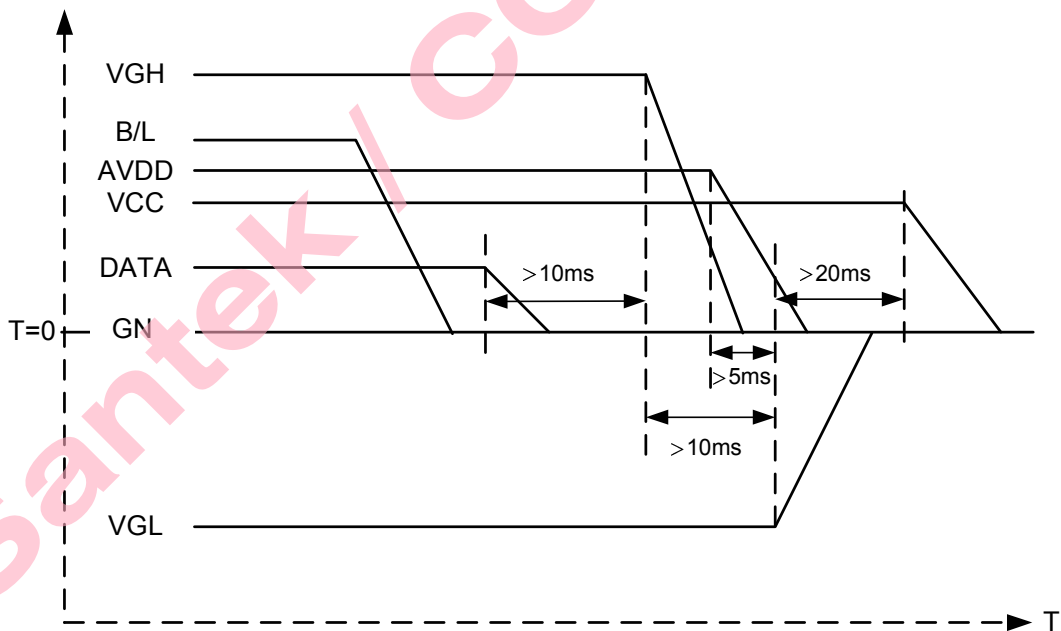
Note 2: The "LED life time" is defined as the module brightness decrease to 50% original brightness at $T_a = 25^\circ C$ and $I_L = 500mA$. The LED life time could be decreased if operating I_L is larger than 500 mA.

3.2 Power Sequence

3.2.1 Power on:



3.2.2 Power off:



Note: Data includes POL, STVD, OEV, CKV, STVU, EDGSL, STHL, REV, DCLK, STHR, LD.

3.3 Timing Characteristics

3.3.1 Timing Conditions

Item	Symbol	Values			Unit	Remark
		Min.	Typ.	Max.		
DCLK frequency	F_{dclk}	-	40	45	MHz	
DCLK cycle	T_{cph}	22	25	-	ns	
DCLK pulse width	T_{cw}	8	-	-	ns	
Data set-up time	T_{su}	4	-	-	ns	
Data hold time	T_{hd}	2	-	-	ns	
Time that the last data to LD	T_{ld}	1	-	-	Tcph	
Pulse width of LD	T_{wld}	2	-	-	Tcph	
Time that LD to STHL/R	T_{lds}	5	-	-	Tcph	
POL set-up time	T_{psu}	6	-	-	ns	
POL hold time	T_{phd}	6	-	-	ns	
CKV frequency	F_{vc}	-	-	200	KHz	
CKV rise time	T_r	-	-	100	ns	
CKV falling time	T_{ck}	-	-	100	ns	
CKV pulse width	P_{wCLK}	500	-	-	ns	
Horizontal display timing range	T_{dh}	-	800	-	Tcph	
Horizontal timing range	T_h	-	1056	-	Tcph	
STVU/D setup time	T_{suv}	200	-	-	ns	
STVU/D hold time	T_{hdv}	300	-	-	ns	
STVU/D delay time	T_{dt}	-	-	500	ns	
Driver output delay time	T_{do}	-	-	900	ns	
Output rise time	T_{tlh}	-	500	1000	ns	
Output falling time	T_{thl}	-	400	800	ns	
OEV pulse width	T_{wcl}	1	-	-	us	
OEV to Driver output delay time	T_{oe}	-	-	900	ns	
Horizontal lines per field	T_v	512	525	610	Line	
Vertical display timing range	T_{vd}	-	480	-	Line	

3.3.2 Timing Diagram

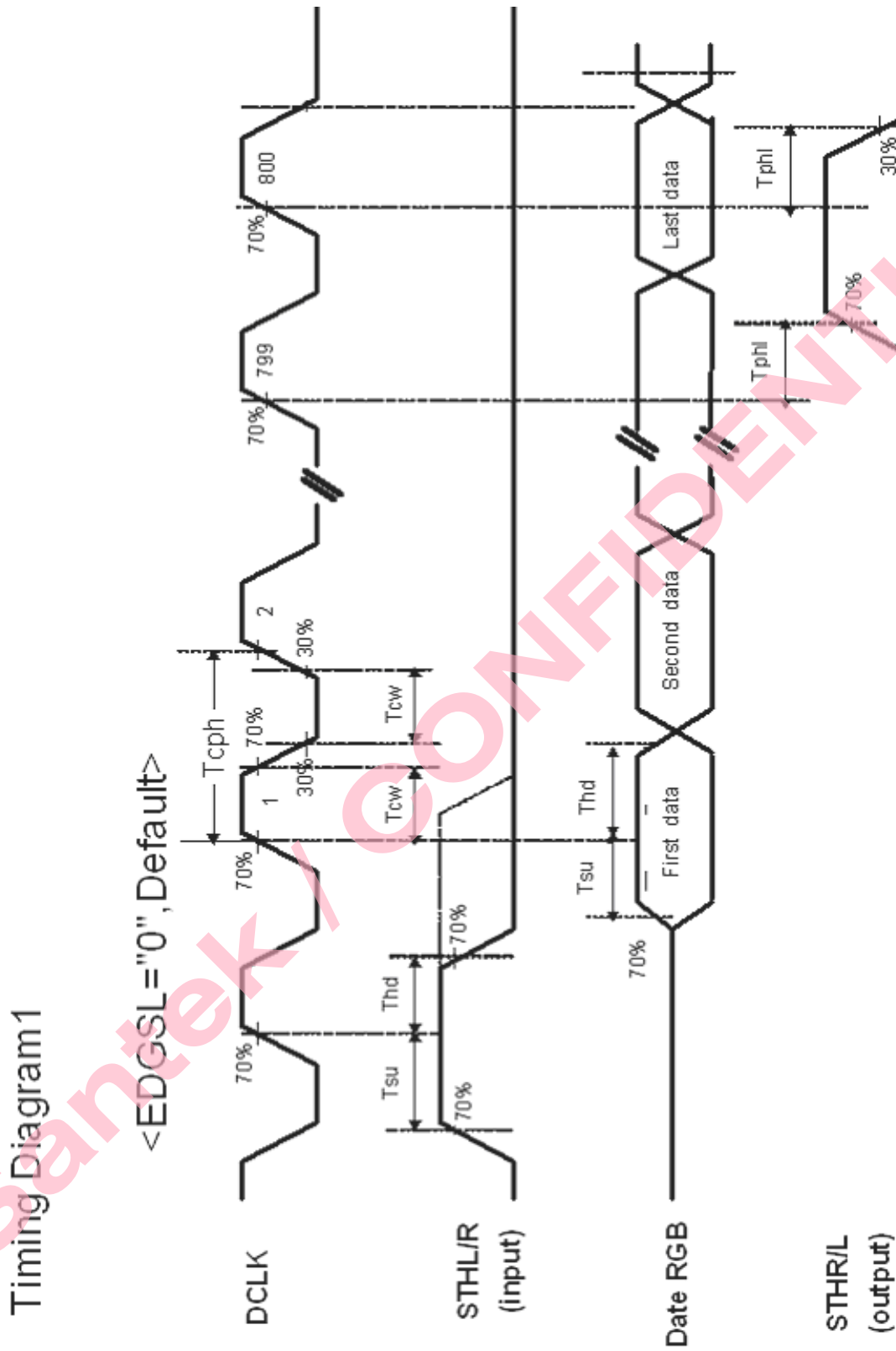


Fig.3-1 operation model 1

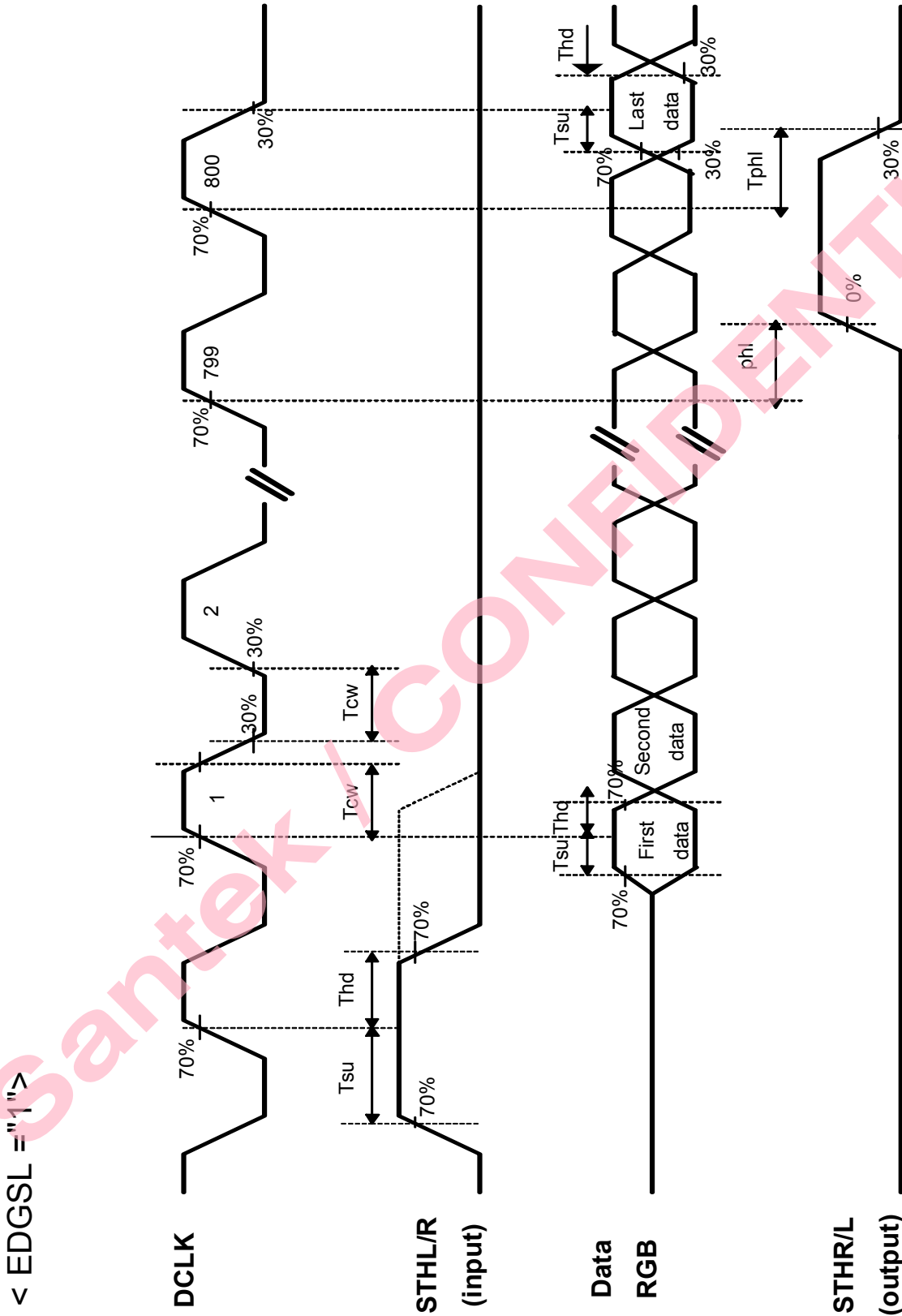


Fig.3-2 operation model 2

Timing Diagram 2

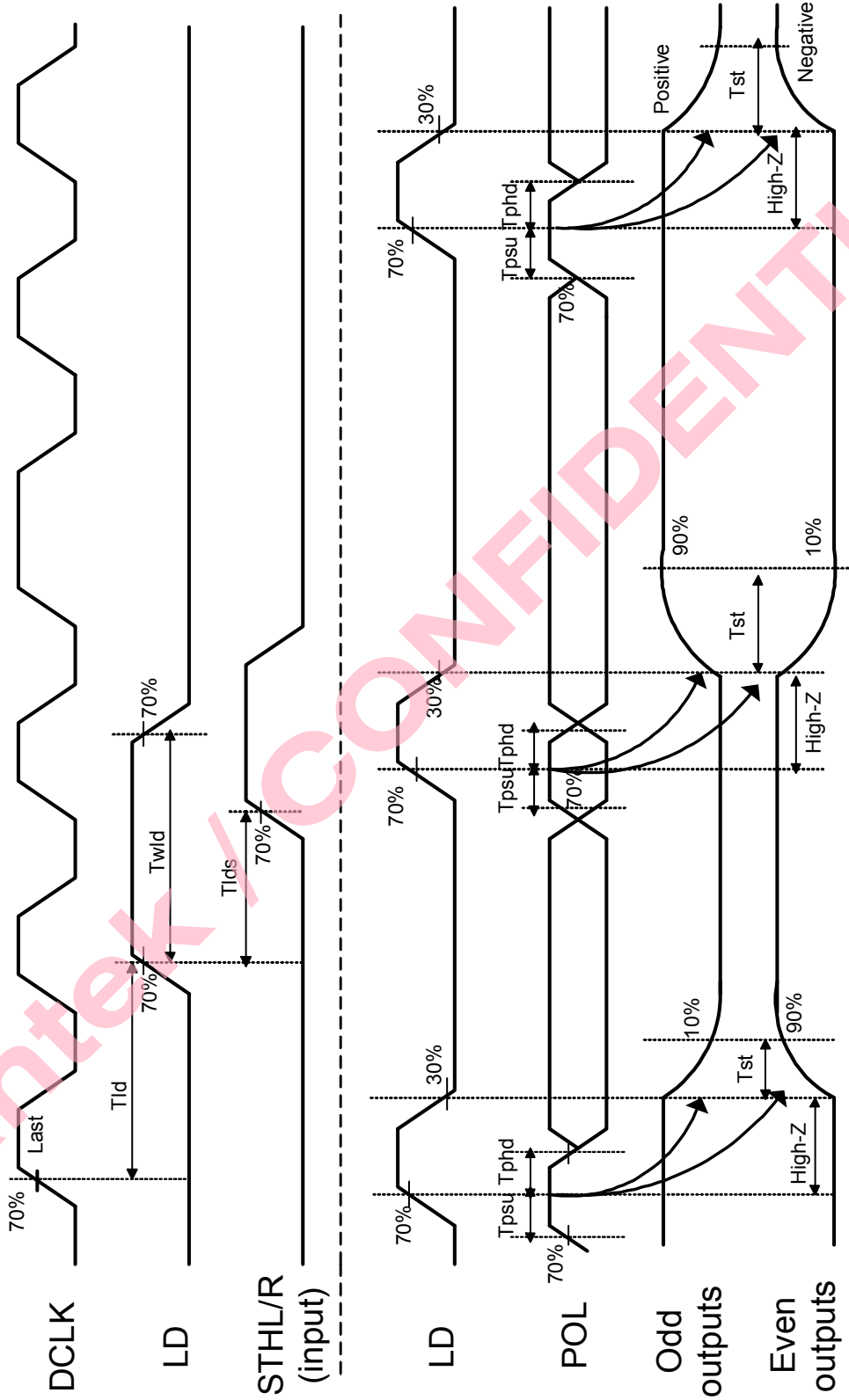


Fig.3-3 Horizontal timing 1

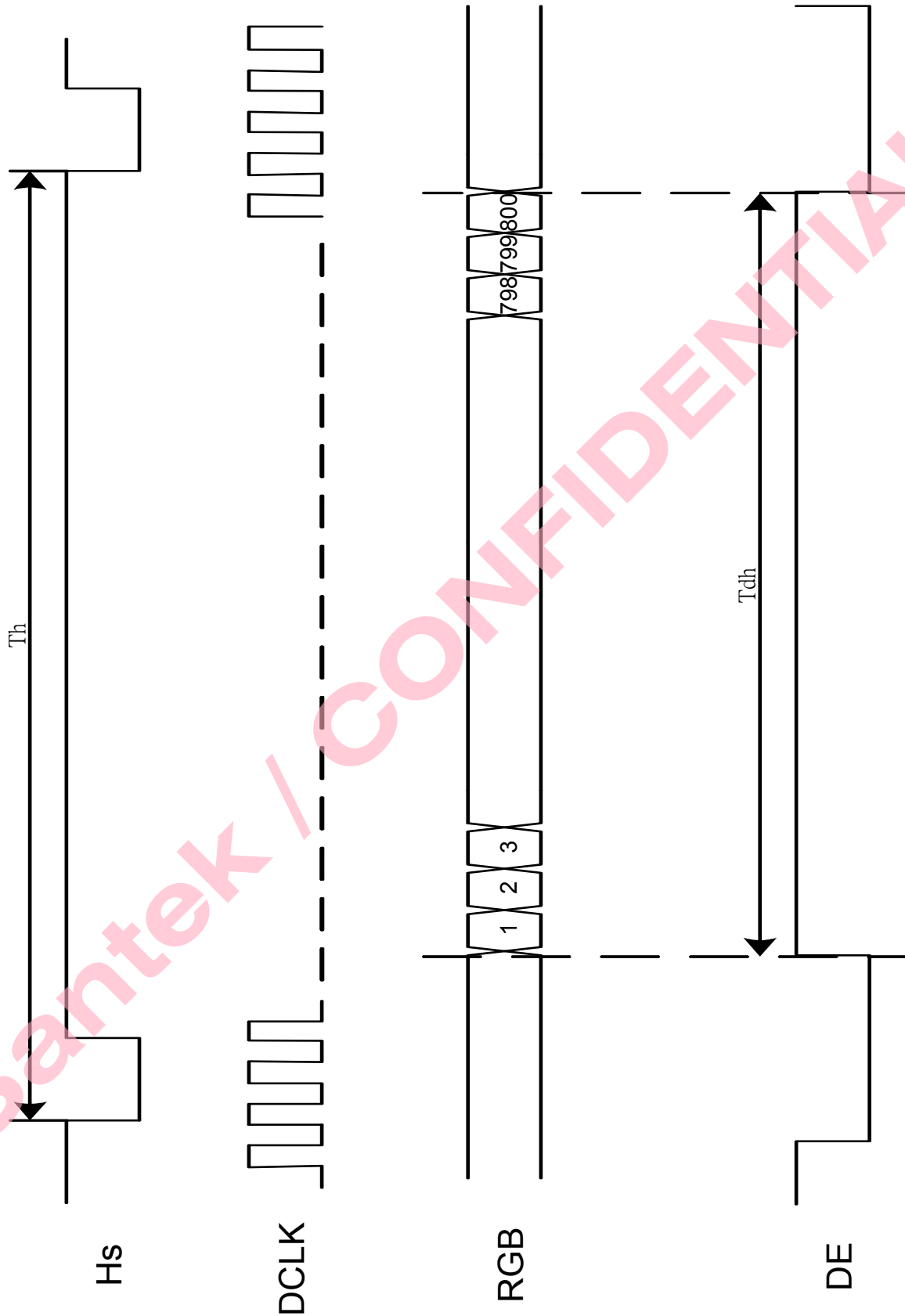


Fig.3-4 Horizontal timing 2

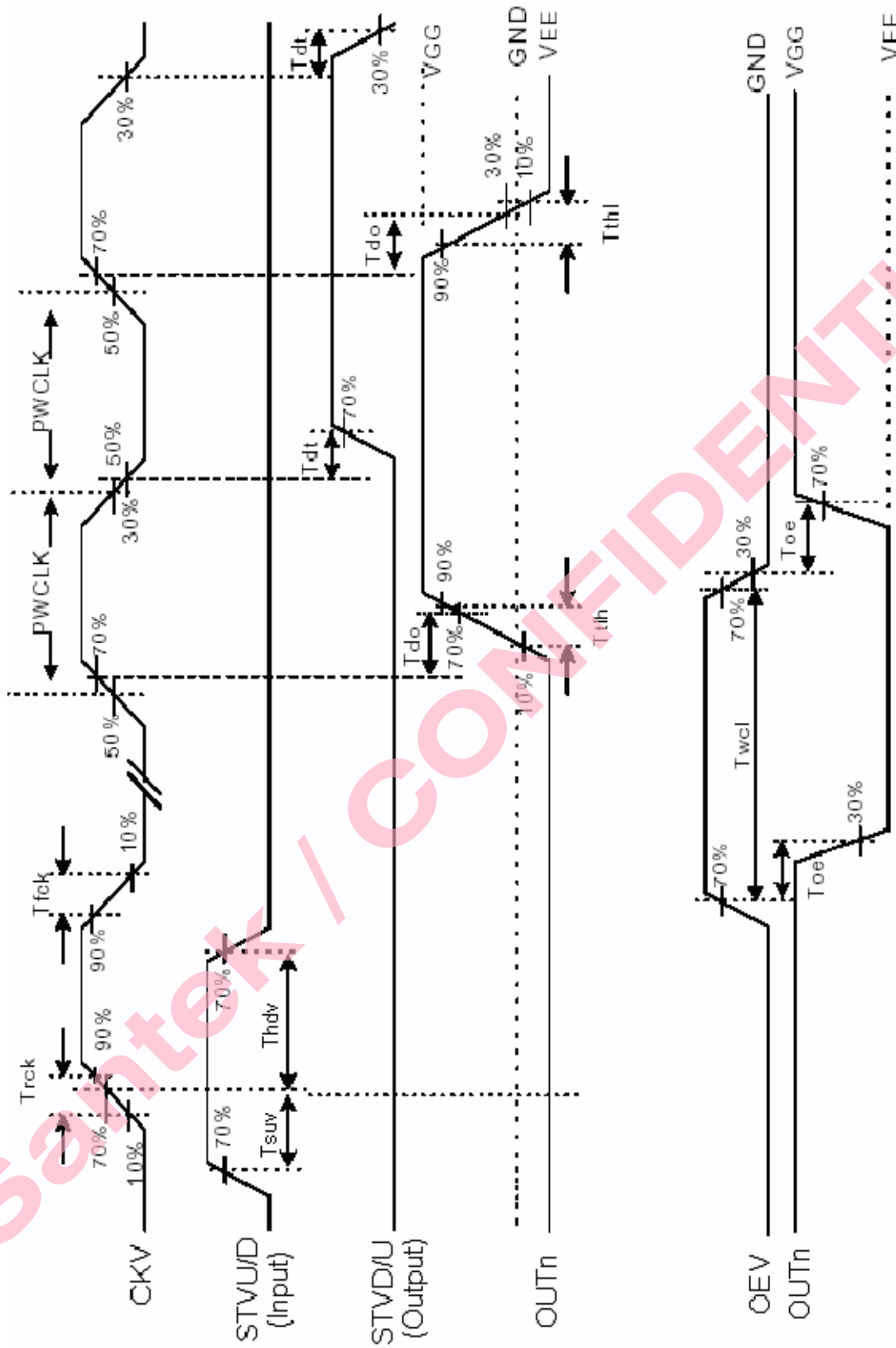


Fig.3-5 Vertical shift clock timing

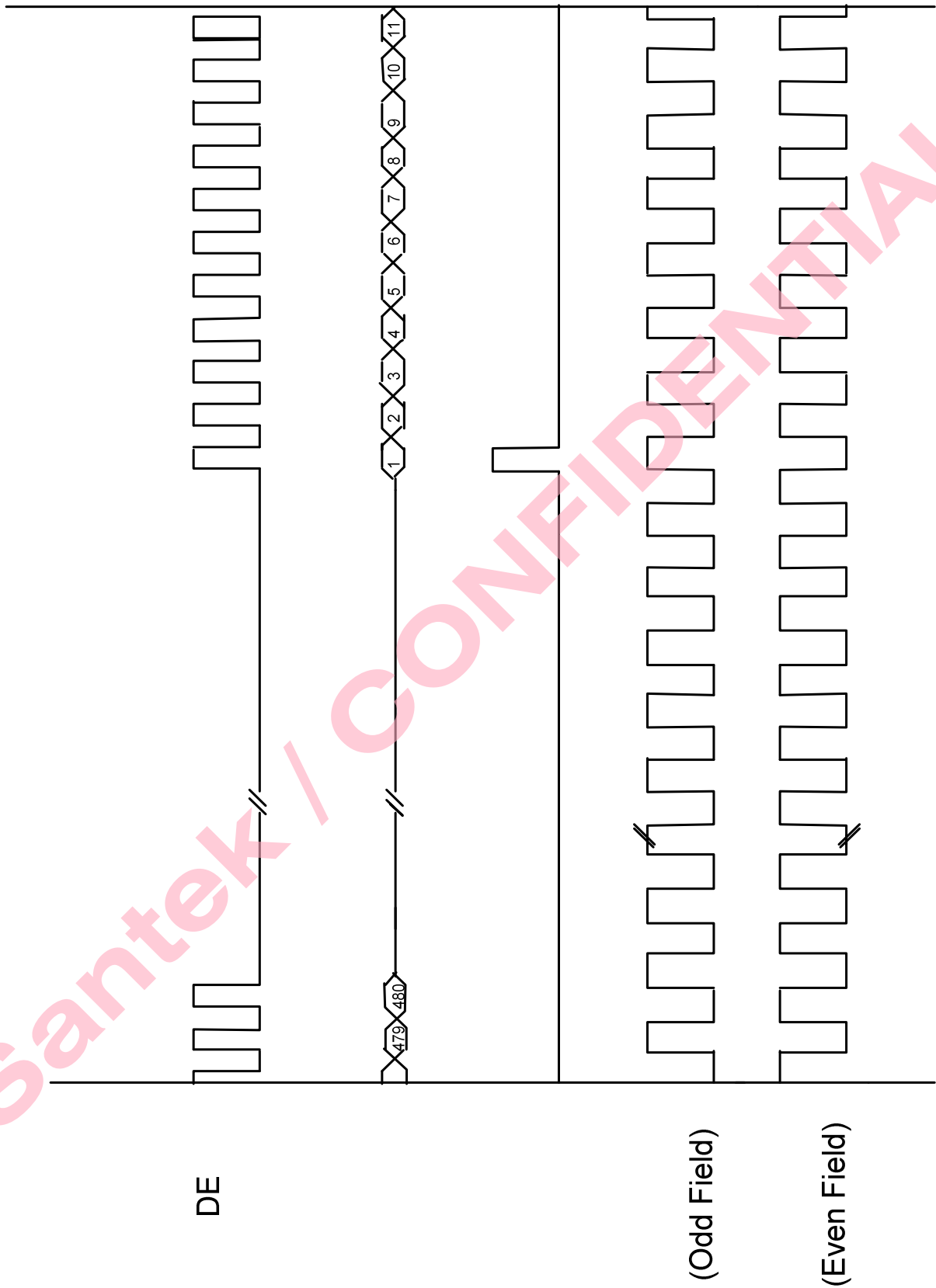


Fig.3-6 Vertical timing (from up to down)

4. CTP General Specification and Characteristics

4.1. Product Type

- Cover Glass + ITO Film
 Cover Glass + ITO Glass
 Cover Glass + ITO Film+ ITO Film

 Cover Glass + ITO Glass(Double side ITO)

4.2. Material Characteristics

Item	Material used	Remark
Lens	Cover Glass	T= 0.7mm
Optically Clear Adhesive	tape	T=0.175mm
Circuit	ITO Glass	T=0.55mm

4.3. Basic Characteristics

Item	Specification	Remark
Outline Dimension	263 × 173.48	mm
Sensor Dimension	234 × 145.80	mm
View Area	223 × 133.48	mm
Active Area	224 x 134.48	mm
FPC length	34.32	mm
Product Thickness	1.425 without Tape	mm

4.4. Operation and Storage

Item		Remark
Operation temperature& Humidity	Humidity: 20 ~ 85 % ; - 20℃ ~ 70℃	Non condensing
Storage temperature& Humidity	Humidity: 20 ~ 85 % ; - 30℃ ~ 80℃	Non condensing

4.5. Electrical Characteristics

Item		Value					Remark
voltage		symbol	Min	Type	Max	Unit	
		vdd	2.8	3.3	3.6	V	
Current	Item	Min	Type	Max	Unit		
	Normal mode			12	mA		
	Sleep mode			50	uA		
X axis linear resistance		≤ 15kΩ					
Y axis linear resistance		≤ 15kΩ					
X ~ X axis and Y ~ Y axis between resistance		≥ 20MΩ					
X ~ Y axis between resistance		≥ 20MΩ					
Chattering		16 msec or less					
IC P/N		Focaltech FT5406					

4.6. Mechanical Characteristics

Item	Performance	Remark
Input method	Use of an exclusive pen or finger	
Hardness Of Surface	Surface : >5H [JIS K 5400]	
Accuracy	+/-1mm@10mm	mm
Support Operation	Finger 5	
Channel	16*28	
Resolution	800*480	
Interface	I2C	
Supported Operating Systems	Android2.0-2.3, Window7	

4.7. Optical Characteristics

Item	Performance	Remark
Total light transmittance	85% or more	
Haze	3% or less	

4.8. Housing Design Guide

TBD

4.9. Software Design Guide

TBD

Santek / CONFIDENTIAL

5. Optical Specifications

Item	Symbol	Condition	Values			Unit	Remark
			Min.	Typ.	Max.		
Viewing angle (CR≥10)	θ_L	$\Phi=180^\circ$ (9 o'clock)	55	65	-	degree	Note 1
	θ_R	$\Phi=0^\circ$ (3 o'clock)	55	65	-		
	θ_T	$\Phi=90^\circ$ (12 o'clock)	35	45	-		
	θ_B	$\Phi=270^\circ$ (6 o'clock)	55	65	-		
Response time	T_{ON}	Normal $\theta=\Phi=0^\circ$	-	15	30	msec	Note 3
	T_{OFF}		-	20	40	msec	Note 3
Contrast ratio	CR		600	800	-	-	Note 4
Color chromaticity	W_X		0.26	0.32	0.35	-	Note 5 Note 6
	W_Y		0.26	0.33	0.37	-	
Luminance	L		1020	1190	-	cd/m ²	Note 6
Luminance uniformity	Y_U	65	75	-	-	Note 7	

Test Conditions:

- $V_C = 3.3V$, $I_L = 500mA$ (Backlight current), the ambient temperature is $25^\circ C$
- The test systems refer to Note 2.

Note 1: Definition of viewing angle range

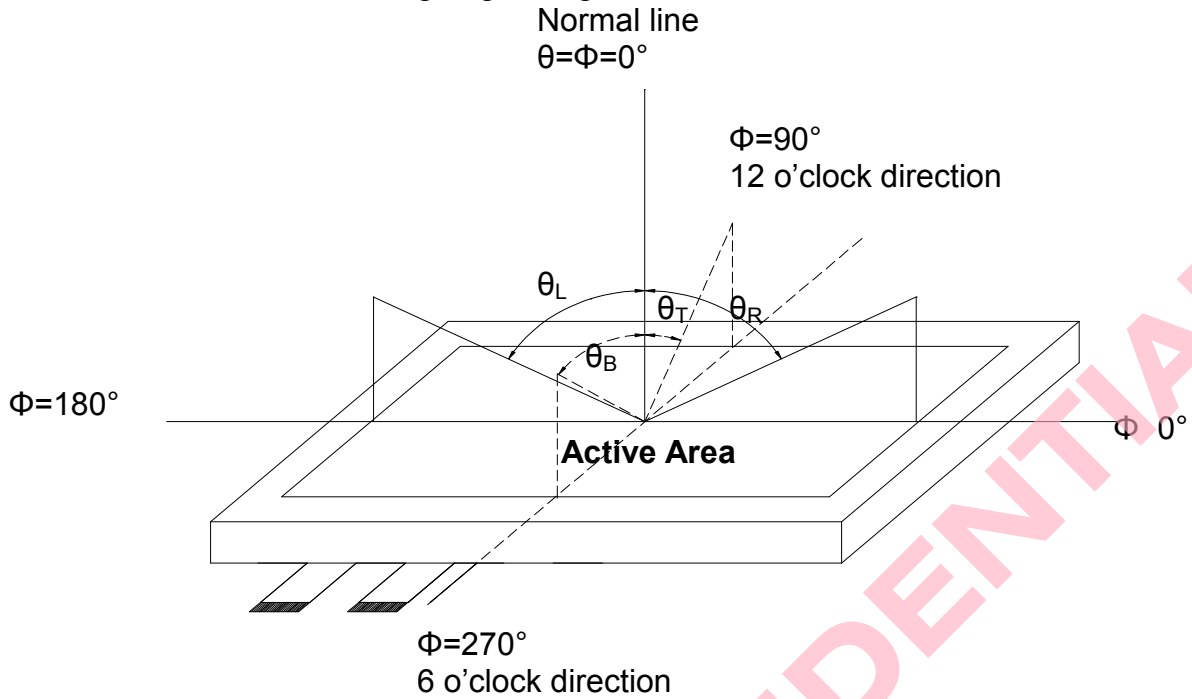


Fig. 4-1 Definition of viewing angle

Note 2: Definition of optical measurement system.

The optical characteristics should be measured in dark room.

The optical properties are measured at the center point of the LCD screen.

(Response time is measured by Photo detector TOPCON BM-7, other items are measured by BM-5A/Field of view: 1° /Height: 500mm.)

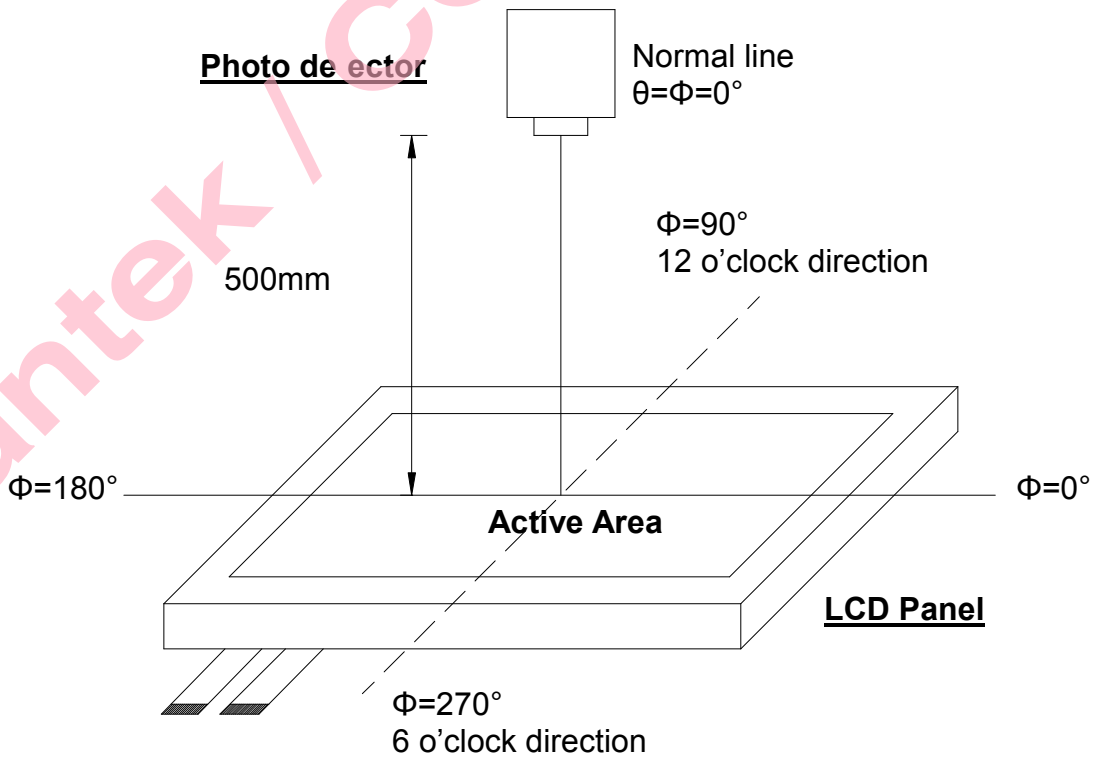


Fig. 4-2 Optical measurement system setup

Note 3: Definition of Response time

The response time is defined as the LCD optical switching time interval between "White" state and "Black" state. Rise time (T_{ON}) is the time between photo detector output intensity changed from 90% to 10%. And fall time (T_{OFF}) is the time between photo detector output intensity changed from 10% to 90%.

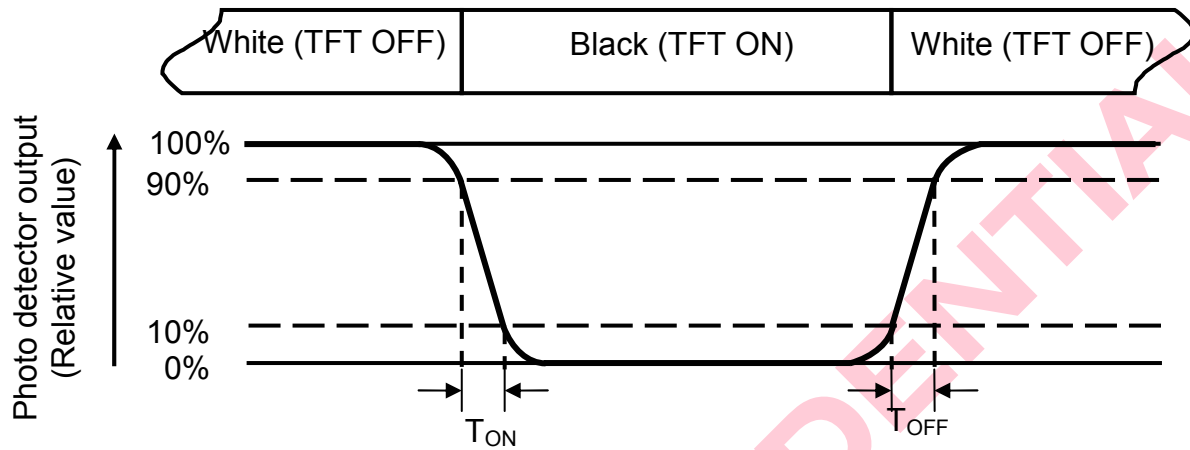


Fig. 4-3 Definition of response time

Note 4: Definition of contrast ratio

$$\text{Contrast ratio (CR)} = \frac{\text{Luminance measured when LCD on the "White" state}}{\text{Luminance measured when LCD on the "Black" state}}$$

Note 5: Definition of color chromaticity (CIE1931)

Color coordinates measured at center point of LCD.

Note 6: All input terminals LCD panel must be ground when measuring the center area of the panel. The LED driving condition is $I_L=500\text{mA}$.

Note 7: Definition of Luminance Uniformity

Active area is divided into 9 measuring areas (Refer to Fig. 4-4).Every measuring point is placed at the center of each measuring area.

$$\text{Luminance Uniformity (Yu)} = \frac{B_{min}}{B_{max}}$$

L-----Active area length W----- Active area width

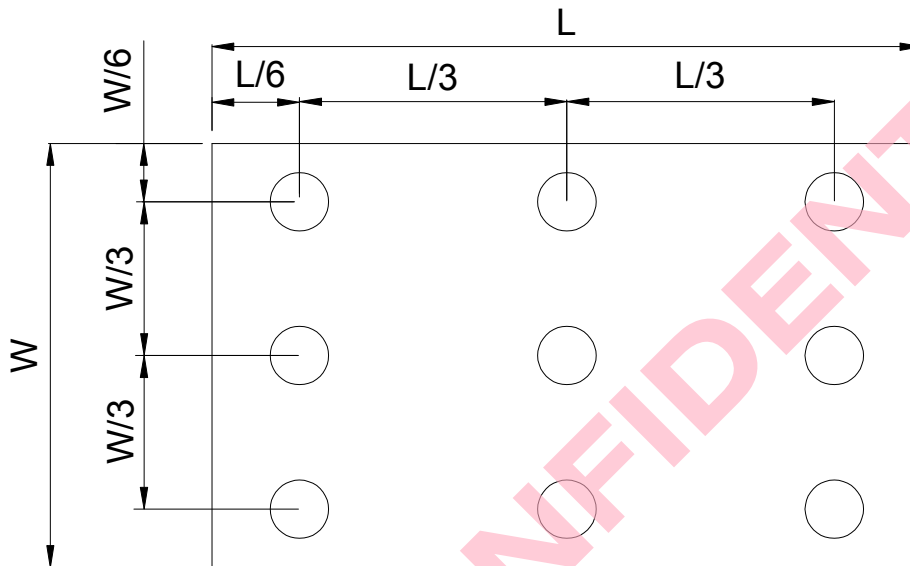


Fig. 4-4 Definition of measuring points

B_{max}: The measured maximum luminance of all measurement position.

B_{min}: The measured minimum luminance of all measurement position.

7. General Precautions

7.1 Safety

1. Liquid crystal is poisonous. Do not put it in your mouth. If liquid crystal touches your skin or clothes, wash it off immediately by using soap and water.
2. This is high brightness backlight. As long time over operating current working, the temperature of the backlight will increase rapidly, the heat maybe damage the backlight
3. Because of backlight heat generation, when application please consider the cooling issues
 1. Need space for Air flow of environment ;

7.2 Handling

1. The LCD panel is plate glass. Do not subject the panel to mechanical shock or to excessive force on its surface.
2. The polarizer attached to the display is easily damaged. Please handle it carefully to avoid scratch or other damages.
3. To avoid contamination on the display surface, do not touch the module surface with bare hands.
4. Keep a space so that the LCD panels do not touch other components.
5. Put cover board such as acrylic board on the surface of LCD panel to protect panel from damages.
6. Transparent electrodes may be disconnected if you use the LCD panel under environmental conditions where the condensation of dew occurs.
7. Do not leave module in direct sunlight to avoid malfunction of the ICs.

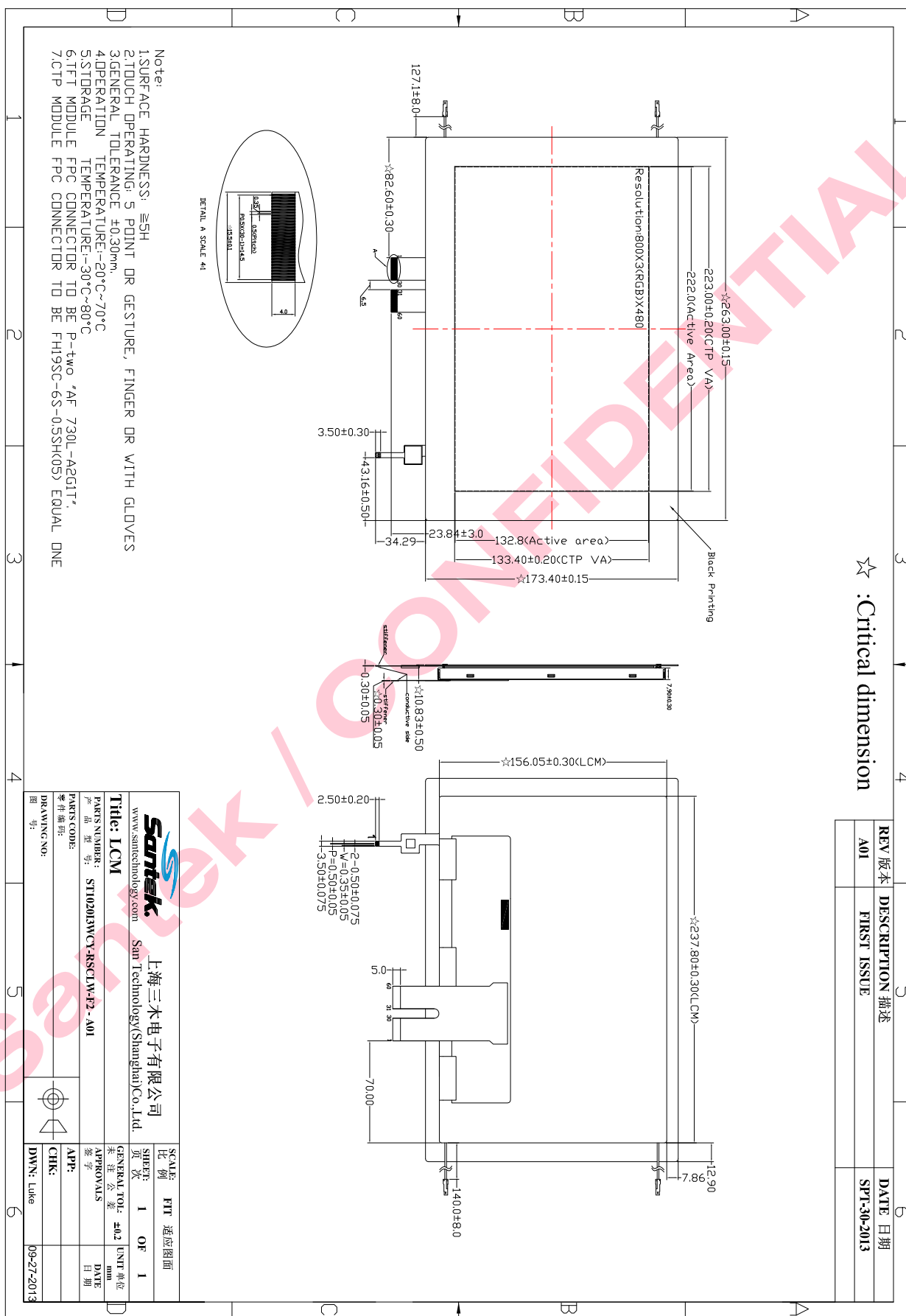
7.3 Static Electricity

1. Be sure to ground module before turning on power or operating module.
2. Do not apply voltage which exceeds the absolute maximum rating value.

7.4 Storage

1. Store the module in a dark room where must keep at $+25\pm 10^{\circ}\text{C}$ and 65%RH or less.
- 2 Do not store the module in surroundings containing organic solvent or corrosive gas
- 3 Store the module in an anti-electrostatic container or bag.

8. Mechanical Drawing



9. Package Drawing

9.1 Packaging Material Table

No	Item	Model (Material)	Dimensions (mm)	Unit Weight (kg)	Quantity	Remark
1	LCD module	ST1020I3WCY-RSCLW-F2	263.0×173.4×10.83	TBD	TBD	
2	Carton	Corrugated paper	TBD	TBD	TBD	
3	Total weight	TBD				

9.2 Packaging Quantity

TBD

9.3 Packaging Drawing

TBD

Santek / CONFIDENTIAL